

Page No.

2-25	Engine and Related Components - 3 Cylinder
27-50	Engine and Related Components - 4 Cylinder
53-69	Engine and Related Components - 6 Cylinder
<hr/>	
27-28	Engine Overhaul Kits (Diesel) - 4 Cylinder
29-34	Pistons, Rings & Liners - 4 Cylinder
35-36	Crankshafts & Main Bearings - 4 Cylinder
37	Connecting Rods & Bearings - 4 Cylinder
38-39	Oil Pans, Pumps & Related Components - 4 Cylinder
40	Engine Oil Filters & Related Components - 4 Cylinder
41-43	Valves & Camshafts - 4 Cylinder
44	Gaskets - 4 Cylinder
45	Fuel Tanks, Lift Pumps & Filters - 4 Cylinder
46	Fuel System & Related Components - 4 Cylinder
47	Air Filters - 4 Cylinder
48	Air Cleaners - 4 Cylinder
49	Manifolds & Exhaust System - 4 Cylinder
50	Mufflers - 4 Cylinder

**Engine and
Related
Components**
(4 Cylinder)

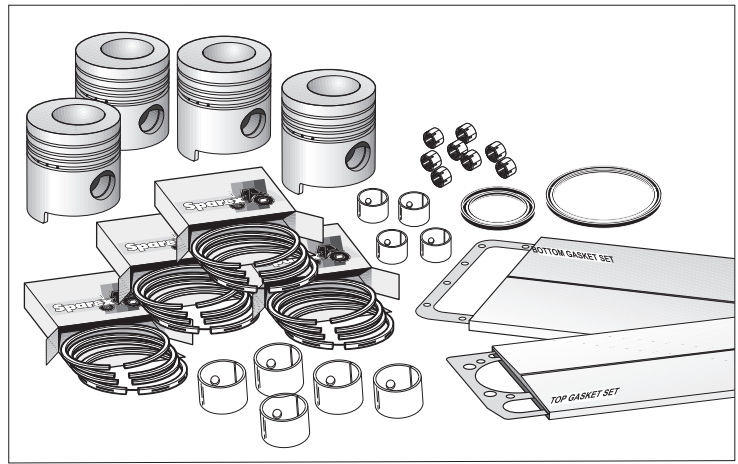
Legend: -> before date means "up to"
-> after date means "on"

These parts are Sparex parts and are not manufactured by the Original Equipment Manufacturer. Original Manufacturers' names, part numbers and descriptions are quoted for reference purposes only and are not intended to indicate or suggest that our replacement parts are made by the OEM.

Sparex Replacement Spare Parts for Ford/New Holland (65->)

Engine Overhaul Kits (4 Cylinder, Diesel)

NOTE: Compression distance is measured from center of piston pin hole to top of piston.

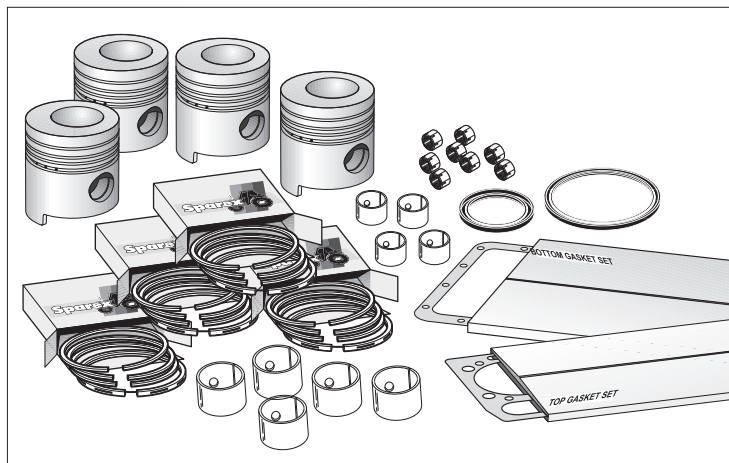


SPAREX No.	DESCRIPTION	EQUIVALENT	TRACTOR MODEL
S.67011	Overhaul Kit - Standard Piston - 233 cu in - Diesel (4.2 Bore, 4.2 Stroke) Piston Pin 1.50", Compression Distance 2.762"		(5000 ->3/68), (5600 ->9/80), Ind. (5500 ->5/68) Includes: Pistons S.65822 x 4, Rings S.65825 x 4, Connecting Rod Bushings S.65237 x 4, Connecting Rod Nuts S.65978 x 8, Camshaft Bushings S.65872 x 5, Upper Gasket Set S.65296 x 1, Lower Gasket Set w/ Crankshaft Seals S.65300 x 1
S.67012	Overhaul Kit w/ .020" Oversize Pistons & Rings		Includes: Pistons S.61304 x 4, Rings S.66058 x 4
S.67013	Overhaul Kit w/ .030" Oversize Pistons & Rings		Includes: Pistons S.61305 x 4, Rings S.66059 x 4
S.67014	Overhaul Kit w/ .040" Oversize Pistons & Rings		Includes: Pistons S.61306 x 4, Rings S.66060 x 4
S.67015	Overhaul Kit - Standard Piston - 256 cu in - Diesel (4.4 Bore, 4.2 Stroke) Piston Pin 1.50", Compression Distance 2.762"		(5000 4/68->), (5600 10/80->), (6600, 6700, 5900 ->9/80), (5610 ->7/87) Ind. 650, 6500 Includes: Pistons S.65820 x 4, Rings S.65826 x 4, Connecting Rod Bushings S.65237 x 4, Connecting Rod Nuts S.65978 x 8, Camshaft Bushings S.65872 x 5, Upper Gasket Set S.65297 x 1, Lower Gasket Set w/ Crankshaft Seals S.65300 x 1
S.67016	Overhaul Kit w/ .020" Oversize Pistons & Rings		Includes: Pistons S.61310 x 4, Rings S.66064 x 4
S.67017	Overhaul Kit w/ .030" Oversize Pistons & Rings		Includes: Pistons S.61311 x 4, Rings S.66065 x 4
S.67018	Overhaul Kit w/ .040" Oversize Pistons & Rings		Includes: Pistons S.61312 x 4, Rings S.66066 x 4
S.67023	Overhaul Kit - Standard Piston - 256 cu in - Diesel (4.4 Bore, 4.2 Stroke) w/ Turbo Piston Pin 1.61", Compression Distance 2.762"		7000, (7600, 7700 ->10/80), Ind. 750, 7500, (755 ->10/80) Includes: Pistons S.65823 x 4, Rings S.65824 x 4, Connecting Rod Bushings S.66044 x 4, Connecting Rod Nuts S.65978 x 8, Camshaft Bushings S.65872 x 5, Upper Gasket Set S.65297 x 1, Lower Gasket Set w/ Crankshaft Seals S.65300 x 1
S.67024	Overhaul Kit w/ .020" Oversize Pistons & Rings		Includes: S.67008 Pistons x 4, S.66061 Rings x 4
S.67025	Overhaul Kit w/ .030" Oversize Pistons & Rings		Includes: S.67009 Pistons x 4, S.66062 Rings x 4
S.67026	Overhaul Kit w/ .040" Oversize Pistons & Rings		Includes: S.67010 Pistons x 4, S.66063 Rings x 4
S.67019	Overhaul Kit - Standard Piston - 268 cu in - Diesel (4.4 Bore, 4.4 Stroke) Piston Pin 1.50", Compression Distance 2.687"		(6600, 6700 10/80->), (6610, 6710 ->7/87) Includes: Pistons S.65821 x 4, Rings S.65826 x 4, Connecting Rod Bushings S.66044 x 4, Connecting Rod Nuts S.65978 x 8, Camshaft Bushings S.65872 x 5, Upper Gasket Set S.65297 x 1, Lower Gasket Set w/ Crankshaft Seals S.65300 x 1
S.67020	Overhaul Kit w/ .020" Oversize Pistons & Rings		Includes: Pistons S.61313 x 4, Rings S.66064 x 4
S.67021	Overhaul Kit w/ .030" Oversize Pistons & Rings		Includes: Pistons S.61326 x 4, Rings S.66065 x 4
S.67022	Overhaul Kit w/ .040" Oversize Pistons & Rings		Includes: Pistons S.61327 x 4, Rings S.66066 x 4

Sparex Replacement Spare Parts
for Ford/New Holland (65->)

Engine Overhaul Kits (4 Cylinder, Diesel)

NOTE: Compression distance is measured from center of piston pin hole to top of piston.



SPAREX No.	DESCRIPTION	EQUIVALENT	TRACTOR MODEL
S.67027	Overhaul Kit - Standard Piston - 268 cu in - Diesel (4.4 Bore, 4.4 Stroke) w/ Turbo		(7600, 7700 10/80->), (7610, 7710 ->7/87), Ind. (755, 755A, 755B ->7/87) Includes: Pistons S.66313 x 4, Rings S.65824 x 4, Connecting Rod Bushings S.66044 x4, Connecting Rod Nuts S.65978 x 8, Camshaft Bushings S.65872 x 5, Upper Gasket Set S.65297 x 1, Lower Gasket Set w/ Crankshaft Seals S.65300 x 1
S.67028	Overhaul Kit w/ .020" Oversize Pistons & Rings		Includes: Pistons S.66807 x 4, Rings S.66061 x 4
S.67029	Overhaul Kit w/ .030" Oversize Pistons & Rings		Includes: Pistons S.66808 x 4, Rings S.66062 x 4
S.67030	Overhaul Kit w/ .040" Oversize Pistons & Rings		Includes: Pistons S.66809 x 4, Rings S.66063 x 4

These parts are Sparex parts and are not manufactured by the Original Equipment Manufacturer. Original Manufacturers' names, part numbers and descriptions are quoted for reference purposes only and are not intended to indicate or suggest that our replacement parts are made by the OEM.

WARNING

Do not install if compression height and bowl do not match up to the piston removed. We recommend that you use the same type piston throughout the engine.

Sparex Replacement Spare Parts for Ford/New Holland (65->)

(*Piston w/ Rings, **Keystone)



Model	Piston Standard	Piston +0.020"	Piston +0.030"	Piston +0.040"	Ring Set Standard (Premium)	Ring Set Standard	Ring Set +0.020"	Ring Set +0.030"	Ring Set +0.040"
555C, 555D (11/88>)(4.4) Less Turbo	S.67001 F2NN6K100CA	S.67002 E7NN6108CA	S.67003 E7NN6108DA	S.67004 E7NN6108EA	S.65997 83917468 DJPN6149W	S.65826 83917468 DJPN6149W	S.66064 83917469 DJPN6149X	S.66065 83917470 DJPN6149Y	S.66066 83917471 DJPN6149Z
555C, 555D 575D (11/88>) With Turbo (4.4)	**			S.65995 E8NN6108EA DFPN6149E	S.65824 83905823 DFPN6149E	S.66061 83905823 DFPN6149B	S.66062 83904263 DFPN6149C	S.66063 83904264 DFPN6149D	83904265
655, 655A (>07/87) (4.4)	S.65820 83937063 D4NN6108AA	S.61310 81846016 D4NN6108AC	S.61311 81846017 D4NN6108AD	S.61312 81846018 D4NN6108AE	S.65997 83917468 DJPN6149W	S.65826 83917468 DJPN6149W	S.66064 83917469 DJPN6149X	S.66065 83917470 DJPN6149Y	S.66066 83917471 DJPN6149Z
655C (4.4) (11/88>) Less Turbo	S.66601 E7NN6108FA	S.67005 E7NN6108HA	S.67006 E7NN6108JA	S.67007 E7NN6108KA	S.65997 83917468 DJPN6149W	S.65826 83917468 DJPN6149W	S.66064 83917469 DJPN6149X	S.66065 83917470 DJPN6149Y	S.66066 83917471 DJPN6149Z
655C, 655D (11/88>) (4.4) With Turbo	**			S.65995 E8NN6108EA DFPN6149E	S.65824 83905823 DFPN6149E	S.66061 83905823 DFPN6149B	S.66062 83904263 DFPN6149C	S.66063 83904264 DFPN6149D	83904265
655D (4.4) (11/88>) Less Turbo	S.66601 E7NN6108FA	S.67005 E7NN6108HA	S.67006 E7NN6108JA	S.67007 E7NN6108KA	S.65997 83917468 DJPN6149W	S.65826 83917468 DJPN6149W	S.66064 83917469 DJPN6149X	S.66065 83917470 DJPN6149Y	S.66066 83917471 DJPN6149Z
755 (4.2) (>10/80)	S.65823** D6NN6108Y	S.67008 D6NN6108AA	S.67009 D6NN6108AB	S.67010 D6NN6108AC	S.65995 83905823 DFPN6149E	S.65824 83905823 DFPN6149E	S.66061 83904263 DFPN6149B	S.66062 83904264 DFPN6149C	S.66063 83904265 DFPN6149D
755 (4.4) (11/80-7/87)	S.66313** D9NN6108FA	S.66807 D9NN6108HA	S.66808 D9NN6108JA	S.66809 D9NN6108KA	S.65995 83905823 DFPN6149E	S.65824 83905823 DFPN6149E	S.66061 83904263 DFPN6149B	S.66062 83904264 DFPN6149C	S.66063 83904265 DFPN6149D
755B (4.4) (8/87>)	**				S.65995 83905823 DFPN6149E	S.65824 83905823 DFPN6149E	S.66061 83904263 DFPN6149B	S.66062 83904264 DFPN6149C	S.66063 83904265 DFPN6149D
4830 (4.4) (7/90>6/94)	S.67001 F2NN6K100CA	S.67002 E7NN6108CA	S.67003 E7NN6108DA	S.67004 E7NN6108EA	S.65997 83917468 DJPN6149W	S.65826 83917468 DJPN6149W	S.66064 83917469 DJPN6149X	S.66065 83917470 DJPN6149Y	S.66066 83917471 DJPN6149Z
4835 (1/96>)	S.62022* 1930241				S.62028 1930169				
5000 (4.2) (65>4/68) Diesel	S.65822 83910850 D6NN6108L	S.61304 83910852 D6NN6108N	S.61305 83910853 D6NN6108P	S.61306 83910854 D6NN6108R	S.65996 83917464 DJPN6149S	S.65825 83917464 DJPN6149S	S.66058 83917465 DJPN6149T	S.66059 83917466 DJPN6149U	S.66060 83917467 DJPN6149V
5000 (4.4) (4/68>) Diesel	S.65820 83937063 D4NN6108AA	S.61310 81846016 D4NN6108AC	S.61311 81846017 D4NN6108AD	S.61312 81846018 D4NN6108AE	S.65997 83917468 DJPN6149W	S.65826 83917468 DJPN6149W	S.66064 83917469 DJPN6149X	S.66065 83917470 DJPN6149Y	S.66066 83917471 DJPN6149Z
5030 (4.4) (10/92>)	S.67001 F2NN6K100CA	S.67002 E7NN6108CA	S.67003 E7NN6108DA	S.67004 E7NN6108EA	S.65997 83917468 DJPN6149W	S.65826 83917468 DJPN6149W	S.66064 83917469 DJPN6149X	S.66065 83917470 DJPN6149Y	S.66066 83917471 DJPN6149Z
5600 (4.2) (>1/82)	S.65822 83910850 D6NN6108L	S.61304 83910582 D6NN6108N	S.61305 83910853 D6NN6108P	S.61306 83910854 D6NN6108R	S.65996 83917464 DJPN6149S	S.65825 83917464 DJPN6149S	S.66058 83917465 DJPN6149T	S.66059 83917466 DJPN6149U	S.66060 83917467 DJPN6149V
5610 (4.4) (1/82-8/87)	S.65820 83937063 D4NN6108AA	S.61310 81846016 D4NN6108AC	S.61311 81846017 D4NN6108AD	S.61312 81846018 D4NN6108AE	S.65997 83917468 DJPN6149W	S.65826 83917468 DJPN6149W	S.66064 83917469 DJPN6149X	S.66065 83917470 DJPN6149Y	S.66066 83917471 DJPN6149Z

These parts are Sparex parts and are not manufactured by the Original Equipment Manufacturer. Original Manufacturers' names, part numbers and descriptions are quoted for reference purposes only and are not intended to indicate or suggest that our replacement parts are made by the OEM.

Pistons, Rings & Liners (4 Cylinder) Con't.



NOTE: All liners are Unfinished

Sparex Replacement Spare Parts
for Ford/New Holland (65->)



Model	Liner Standard	liner +0.030"	Liner +0.100"	Liner +0.100"			
555C, 555D (1/11/88>) (4.4) Less Turbo	S.65827 Flanged 83912946 D7NN6055A	S.65944 Flanged OD=+0.030"	S.65945 Flanged OD=+0.100"	S.65883 Parallel OD=+0.100"			
555C, 555D 575D (11/88>) With Turbo (4.4)	S.65827 Flanged 83912946 D7NN6055A	S.65944 Flanged OD=+0.030"	S.65945 Flanged OD=+0.100"	S.65883 Parallel OD=+0.100"			
655, 655A (>7/87) (4.4)	S.65827 Flanged 83912946 D7NN6055A	S.65944 Flanged OD=+0.030"	S.65945 Flanged OD=+0.100"	S.65883 Parallel OD=+0.100"			
655C (4.4) (11/88>) Less Turbo	S.65827 Flanged 83912946 D7NN6055A	S.65944 Flanged OD=+0.030"	S.65945 Flanged OD=+0.100"	S.65883 Parallel OD=+0.100"			
655C, 655D (11/88>) (4.4) With Turbo	S.65827 Flanged 83912946 D7NN6055A	S.65944 Flanged OD=+0.030"	S.65945 Flanged OD=+0.100"	S.65883 Parallel OD=+0.100"			
655D (4.4) (11/88>) Less Turbo	S.65827 Flanged 83912946 D7NN6055A	S.65944 Flanged OD=+0.030"	S.65945 Flanged OD=+0.100"	S.65883 Parallel OD=+0.100"			
755 (4.2) (>10/80)	S.65828 Parallel 81815327 C5NN6055A						
755 (4.4) (11/80-7/87)	S.65827 Flanged 83912946 D7NN6055A	S.65944 Flanged OD=+0.030"	S.65945 Flanged OD=+0.100"	S.65883 Parallel OD=+0.100"			
755B (4.4) (8/87>)							
4830 (4.4) (07/90>6/94)	S.65827 Flanged 83912946 D7NN6055A	S.65944 Flanged OD=+0.030"	S.65945 Flanged OD=+0.100"	S.65883 Parallel OD=+0.100"			
4835 (1/96>)	S.62034 4770654						
5000 (4.2) (65>4/68) Diesel	S.65828 Parallel 81815327 C5NN6055A						
5000 (4.4) (4/68>) Diesel	S.65827 Flanged 83912946 D7NN6055A	S.65944 Flanged OD=+0.030"	S.65945 Flanged OD=+0.100"	S.65883 Parallel OD=+0.100"			
5030 (4.4) (10/92>)	S.65827 Flanged 83912946 D7NN6055A	S.65944 Flanged OD=+0.030"	S.65945 Flanged OD=+0.100"	S.65883 Parallel OD=+0.100"			
5600 (4.2) (>1/82)	S.65828 Parallel 81815327 C5NN6055A						
5610 (4.4) (1/82>8/87)	S.65827 Flanged 83912946 D7NN6055A	S.65944 Flanged OD=+0.030"	S.65945 Flanged OD=+0.100"	S.65883 Parallel OD=+0.100"			

These parts are Sparex parts and are not manufactured by the Original Equipment Manufacturer. Original Manufacturers' names, part numbers and descriptions are quoted for reference purposes only and are not intended to indicate or suggest that our replacement parts are made by the OEM.

WARNING

Do not install if compression height and bowl do not match up to the piston removed. We recommend that you use the same type piston throughout the engine.

Sparex Replacement Spare Parts for Ford/New Holland (65->)

(*Piston w/ Rings, **Keystone)



Model	Piston Standard	Piston +0.020"	Piston +0.030"	Piston +0.040"	Ring Set Standard (Premium)	Ring Set Standard	Ring Set +0.020"	Ring Set +0.030"	Ring Set +0.040"
5610 (4.4) (8/87>)	S.67001 F2NN6K100CA	S.67002 E7NN6108CA	S.67003 E7NN6108DA	S.67004 E7NN6108EA	S.65997 83917468 DJPN6149W	S.65826 83917468 DJPN6149W	S.66064 83917469 DJPN6149X	S.66065 83917470 DJPN6149Y	S.66066 83917471 DJPN6149Z
5635 (1/96>) 8045.05	S.62023* 1930186				S.62029 1930191				
5640 (11/91>) POWERSTAR 4.4	S.66519 82850254				S.66525 82850251				
5900 (8/87-12/87)	S.65820 83937063 F2NN6K100CA	S.61310 81846016 E7NN6108CA	S.61311 81846017 E7NN6108DA	S.61312 81846018 E7NN6108EA	S.65997 83917468 DJPN6149W	S.65826 83917468 DJPN6149W	S.66064 83917469 DJPN6149X	S.66065 83917470 DJPN6149Y	S.66066 83917471 DJPN6149Z
5900 (4.4) (1/88>)					S.65997 83917468 DJPN6149W	S.65826 83917468 DJPN6149W	S.66064 83917469 DJPN6149X	S.66065 83917470 DJPN6149Y	S.66066 83917471 DJPN6149Z
6600 (4.4) (>10/80) Diesel	S.65820 83937063 D4NN6108AA	S.61310 81846016 D4NN6108AC	S.61311 81846017 D4NN6108AD	S.61312 81846018 D4NN6108AE	S.65997 83917468 DJPN6149W	S.65826 83917468 DJPN6149W	S.66064 83917469 DJPN6149X	S.66065 83917470 DJPN6149Y	S.66066 83917471 DJPN6149Z
6600 (4.4) (10/80-1/82) Diesel	S.65821 83928178 E0NN6108AA	S.61313 83928180 E0NN6108CA	S.61326 83928181 E0NN6108DA	S.61327 83928182 E0NN6108EA	S.65997 83917468 DJPN6149W	S.65826 83917468 DJPN6149W	S.66064 83917469 DJPN6149X	S.66065 83917470 DJPN6149Y	S.66066 83917471 DJPN6149Z
6610 (4.4) (>8/87)	S.65821 83928178 E0NN6108AA	S.61313 83928180 E0NN6108CA	S.61326 83928181 E0NN6108DA	S.61327 83928182 E0NN6108EA	S.65997 83917468 DJPN6149W	S.65826 83917468 DJPN6149W	S.66064 83917469 DJPN6149X	S.66065 83917470 DJPN6149Y	S.66066 83917471 DJPN6149Z
6610 (4.4) (8/87>)	S.66601 83960625 E7NN6108FA	S.67005 E7NN6108HA	S.67006 E7NN6108JA	S.67007 E7NN6108KA	S.65997 83917468 DJPN6149W	S.65826 83917468 DJPN6149W	S.66064 83917469 DJPN6149X	S.66065 83917470 DJPN6149Y	S.66066 83917471 DJPN6149Z
6640 (11/91>) POWERSTAR 5.0	S.66521 82850253				S.66525 82850251				
6700 (4.4) (>10/80) Diesel	S.65820 83937063 D4NN6108AA	S.61310 81846016 D4NN6108AC	S.61311 81846017 D4NN6108AD	S.61312 81846018 E4NN6108AE	S.65997 83917468 DJPN6149W	S.65826 83917468 DJPN6149W	S.66064 83917469 DJPN6149X	S.66065 83917470 DJPN6149Y	S.66066 83917471 DJPN6149Z
6700 (4.4) (11/80>12/81) Diesel	S.65821 83928178 E0NN6108AA	S.61313 83928180 E0NN6108CA	S.61326 83928181 E0NN6108DA	S.61327 83928182 E0NN6108EA	S.65997 83917468 DJPN6149W	S.65826 83917468 DJPN6149W	S.66064 83917469 DJPN6149X	S.66065 83917470 DJPN6149Y	S.66066 83917471 DJPN6149Z
6710 (4.4) (>10/85)	S.65821 83928178 E0NN6108AA	S.61313 83928180 E0NN6108CA	S.61326 83928181 E0NN6108DA	S.61327 83928182 E0NN6108EA	S.65997 83917468 DJPN6149W	S.65826 83917468 DJPN6149W	S.66064 83917469 DJPN6149X	S.66065 83917470 DJPN6149Y	S.66066 83917471 DJPN6149Z
7000 (4.4)	S.65823* 83912026 D6NN6108Y	S.67008 D6NN6108AA	S.67009 D6NN6108AB	S.67010 D6NN6108AC	S.65995 83905823 DFPN6149E	S.65824 83905823 DFPN6149E	S.66061 83904263 DFPN6149B	S.66062 83904264 DFPN6149C	S.66063 83904265 DFPN6149D
7600 (4.4) (>1/82)	S.65823* 83912026 D6NN6108Y	S.67008 D6NN6108AA	S.67009 D6NN6108AB	S.67010 D6NN6108AC	S.65995 83905823 DFPN6149E	S.65824 83905823 DFPN6149E	S.66061 83904263 DFPN6149B	S.66062 83904264 DFPN6149C	S.66063 83904265 DFPN6149D
7610 (4.4) (1/82-3/87)	S.66313* 83919735 D9NN6108FA	S.67007 D9NN6108HA	S.67008 D9NN6108JA	S.67009 D9NN6108KA	S.65995 83905823 DFPN6149E	S.65824 83905823 DFPN6149E	S.66061 83904263 DFPN6149B	S.66062 83904264 DFPN6149C	S.66063 83904265 DFPN6149D
7610 (4.4) (8/87>)	*				S.65995 83905823 DFPN6149E	S.65824 83905823 DFPN6149E	S.66061 83904263 DFPN6149B	S.66062 83904264 DFPN6149C	S.66063 83904265 DFPN6149D

Pistons, Rings & Liners (4 Cylinder) Con't.



NOTE: All liners are Unfinished

Sparex Replacement Spare Parts
for Ford/New Holland (65->)



Model	Liner Standard	liner +0.030"	Liner +0.100"	Liner +0.100"			
5610 (4.4) (8/87>)	S.65827 Flanged 83912946 D7NN6055A	S.65944 Flanged OD=+0.030"	S.65945 Flanged OD=+0.100"	S.65883 Parallel OD=+0.100"			
5635 (1/96>) 8045.05	S.62035 4770623						
5640 (1/91>) POWERSTAR 4.4	S.66527 83998292						
5900 (8/87-12/87)	S.65827 Flanged 83912946 D7NN6055A	S.65944 Flanged OD=+0.030"	S.65945 Flanged OD=+0.100"	S.65883 Parallel OD=+0.100"			
5900 (4.4) (1/88>)	S.65827 Flanged 83912946 D7NN6055A	S.65944 Flanged OD=+0.030"	S.65945 Flanged OD=+0.100"	S.65883 Parallel OD=+0.100"			
6600 (4.4) (>10/80)	S.65827 Flanged 83912946 D7NN6055A	S.65944 Flanged OD=+0.030"	S.65945 Flanged OD=+0.100"	S.65883 Parallel OD=+0.100"			
6600 (4.4) (10/80>1/82)	S.65827 Flanged 83912946 D7NN6055A	S.65944 Flanged OD=+0.030"	S.65945 Flanged OD=+0.100"	S.65883 Parallel OD=+0.100"			
6610 (4.4) (>8/87)	S.65827 Flanged 83912946 D7NN6055A	S.65944 Flanged OD=+0.030"	S.65945 Flanged OD=+0.100"	S.65883 Parallel OD=+0.100"			
6610 (4.4) (8/87>)	S.65827 Flanged 83912946 D7NN6055A	S.65944 Flanged OD=+0.030"	S.65945 Flanged OD=+0.100"	S.65883 Parallel OD=+0.100"			
6640 (11/91>) POWERSTAR 5.0	S.66527 83998292						
6700 (4.4) (>10/80)	S.65827 Flanged 83912946 D7NN6055A	S.65944 Flanged OD=+0.030"	S.65945 Flanged OD=+0.100"	S.65883 Parallel OD=+0.100"			
6700 (4.4) (11/80-12/81)	S.65827 Flanged 83912946 D7NN6055A	S.65944 Flanged OD=+0.030"	S.65945 Flanged OD=+0.100"	S.65883 Parallel OD=+0.100"			
6710 (4.4) (>10/85)	S.65827 Flanged 83912946 D7NN6055A	S.65944 Flanged OD=+0.030"	S.65945 Flanged OD=+0.100"	S.65883 Parallel OD=+0.100"			
7000 (4.4)	S.65827 Flanged 83912946 D7NN6055A	S.65944 Flanged OD=+0.030"	S.65945 Flanged OD=+0.100"	S.65883 Parallel OD=+0.100"			
7600 (4.4) (>1/81)	S.65827 Flanged 83912946 D7NN6055A	S.65944 Flanged OD=+0.030"	S.65945 Flanged OD=+0.100"	S.65883 Parallel OD=+0.100"			
7610 (4.4) (1/82-8/87)	S.65827 Flanged 83912946 D7NN6055A	S.65944 Flanged OD=+0.030"	S.65945 Flanged OD=+0.100"	S.65883 Parallel OD=+0.100"			
7610 (4.4) (8/87>)	S.65827 Flanged 83912946 D7NN6055A	S.65944 Flanged OD=+0.030"	S.65945 Flanged OD=+0.100"	S.65883 Parallel OD=+0.100"			

These parts are Sparex parts and are not manufactured by the Original Equipment Manufacturer. Original Manufacturers' names, part numbers and descriptions are quoted for reference purposes only and are not intended to indicate or suggest that our replacement parts are made by the OEM.

WARNING

Do not install if compression height and bowl do not match up to the piston removed. We recommend that you use the same type piston throughout the engine.

Sparex Replacement Spare Parts for Ford/New Holland (65->)



(*Piston w/ Rings, **Keystone)

Model	Piston Standard	Piston +0.020"	Piston +0.030"	Piston +0.040"	Ring Set Standard (Premium)	Ring Set Standard	Ring Set +0.020"	Ring Set +0.030"	Ring Set +0.040"
7635 >C3768 8045.25	**								
7635 D3768> 8045.25	**								
7700 (4.4) (9/80)	S.65823* 83912026 D6NN6108Y	S.67008 D6NN6108AA	S.67009 D6NN6108AB	S.67010 D6NN6108AC	S.65995 83905823 DFPN6149E	S.65824 83905823 DFPN6149E	S.66061 83904263 DFPN6149B	S.66062 83904264 DFPN6149C	S.66063 83904265 DFPN6149D
7710 (4.4) (>8/87)	S.66313* 83919735 D9NN6108FA	S.66807 D9NN6108HA	S.66808 D9NN6108JA	S.66809 D9NN6108KA	S.65995 83905823 DFPN6149E	S.65824 83905823 DFPN6149E	S.66061 83904263 DFPN6149B	S.66062 83904264 DFPN6149C	S.66063 83904265 DFPN6149D
7710 (4.4) (8/87>)	*				S.65995 83905823 DFPN6149E	S.65824 83905823 DFPN6149E	S.66061 83904263 DFPN6149B	S.66062 83904264 DFPN6149C	S.66063 83904265 DFPN6149D
7740 (1/91> POWERSTAR 5.0T	S.66523 82850252 F2NN6K100MB				S.66526 81866003				
TS80 POWERSTAR 5.0	S.66521 82850253				S.66525 87801095				
TS90 POWERSTAR 5.0	S.66521 82850253				S.66525 87801095				
TS100 POWERSTAR 5.0	S.66523 82850252				S.66526 81866003				
TS110 POWERSTAR 5.0T	S.66523 82850252				S.66526 81866003				

Pistons, Rings & Liners (4 Cylinder) Con't.



NOTE: All liners are Unfinished

Sparex Replacement Spare Parts
for Ford/New Holland (65->)

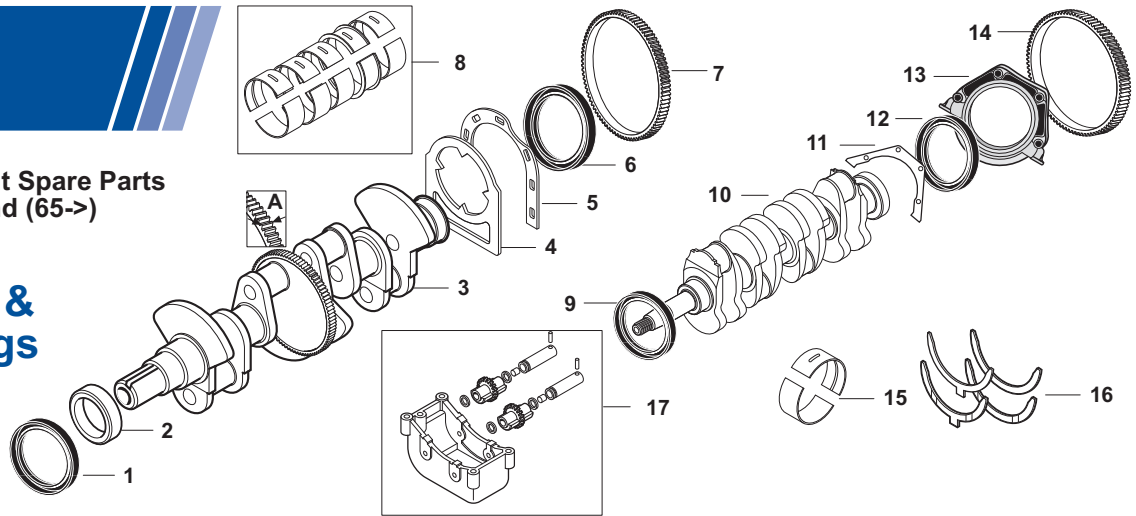


Model	Liner Standard	liner +0.030"	Liner +0.100"	Liner +0.100"			
7635 >C3768 8045.25	S.62035 4770623						
7635 D3768> 8045.25	S.62035 4770623						
7700 (4.4) (9/80)	S.65827 Flanged 83912946 D7NN6055A	S.65944 Flanged OD=+0.030"	S.65945 Flanged OD=+0.100"	S.65883 Parallel OD=+0.100"			
7710 (4.4) (>8/87)	S.65827 Flanged 83912946 D7NN6055A	S.65944 Flanged OD=+0.030"	S.65945 Flanged OD=+0.100"	S.65883 Parallel OD=+0.100"			
7710 (4.4) (8/87->)	S.65827 Flanged 83912946 D7NN6055A	S.65944 Flanged OD=+0.030"	S.65945 Flanged OD=+0.100"	S.65883 Parallel OD=+0.100"			
7740 (1/91>) POWERSTAR 5.0T	S.66527 83998292						
TS80 POWERSTAR 5.0	S.66527 83998292						
TS90 POWERSTAR 5.0	S.66527 83998292						
TS100 POWERSTAR 5.0T	S.66527 83998292						
TS110 POWERSTAR 5.0T	S.66527 83998292						

These parts are Sparex parts and are not manufactured by the Original Equipment Manufacturer. Original Manufacturers' names, part numbers and descriptions are quoted for reference purposes only and are not intended to indicate or suggest that our replacement parts are made by the OEM.

Sparex Replacement Spare Parts for Ford/New Holland (65->)

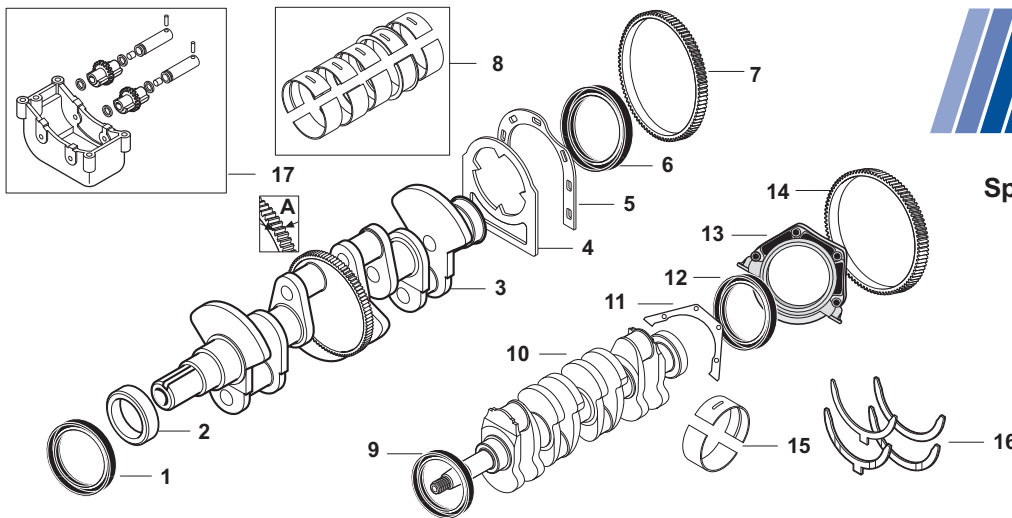
Crankshafts & Main Bearings (4 Cylinder)



SPAREX No.	DESCRIPTION	EQUIVALENT	TRACTOR MODEL
1	S.65672 Seal - Front Crankshaft (83 x 58 x 11.3mm)	87800696 C5NN6700A	5000, 7000, 5600, 5900, 6600, 6700, 7600, 7700, 5610, 5610S, 6610, 6610S, 6710, 7610, 7610S, 7710, 4830, 5030, 5640, 6640, 7740, TS90, TS100, TS110, Ind. 555C, 555D, 555E, 575D, 575E, 5500, 5550, 650, 655, 655A, 655C, 655D, 655E, 675D, 675E, 6500, 750, 755, 755A, 755B, 7500
2	S.73592 Spacer - Front Crankshaft Seal	C5NE6B306A	Same as Above
3	S.66141 Crankshaft - less Bearings (4.2 Stroke) (A=.492"/12.5mm) Uses 36mm Rod Brgs	C5NE6303K	NOTE: Measure Balancer Drive Gear before ordering Do not mix sizes (new OEM Cranks are 15mm)
3	S.66042 Crankshaft - less Bearings (4.4 Stroke) (A=.492"/12.5mm) Uses 36mm Rod Brgs	D9NN6303AA	NOTE: Measure Balancer Drive Gear to order Do not mix sizes (new OEM Cranks are 15mm)
4	S.65807 Gasket - Rear Crankshaft Seal	C7NN6N008B	5000, 7000, 5600, (5900 ->4/87), 6600, 6700, 7600, 7700, 5610, 6610, 6710, 7610, 7710, Ind. 5500, 5550, 650, 655, (655A ->4/87), 6500, 750, 755, (755A ->4/87), 7500
5	S.66049 Gasket- Rear Crankshaft Seal	E9NN6N305AB	(5900, 5610, 6610, 6710, 7610, 7710 4/87->), 4830, 5030, Ind. 555C, 555D, 575D, (655, 655A 4/87->), 655C, 655D, (755B 4/87->)
6	S.65673 Seal - Rear Crankshaft	83955247 E2NN6701BA	5000, 7000, 5600, 5900, 6600, 6700, 7600, 7700, 5610, 6610, 6710, 7610, 7710, 4830, 5030, Ind. 555C, 555D, 575D, 5500, 5550, 650, 655, 655A, 655C, 655D, 6500, 750, 755, 755A, 755B, 7500
7	S.65743 Ring Gear	83949153 E2NN6384AA C5NE6384A	Same as Above (Diesel Only)
8	S.65223 Main Bearing Set - Standard	87790355 CFPN6333A 87790488 EBPN6337A	5000, 7000, 5600, 5900, 6600, 6700, 7600, 7700, 5610, 6610, 6710, 7610, 7710, 4830, 5030, Ind. 555C, 555D, 575D, 5500, 5550, 650, 655, 655A, 655C, 655D, 6500, 750, 755, 755A, 755B, 7500
8	S.65224 Main Bearing Set - .010"	87790358 CFPN6333D 87790491 EBPN6337D	Same as Above
8	S.65225 Main Bearing Set - .020"	87790359 CFPN6333E 87790492 EBPN6337E	Same as Above
8	S.65226 Main Bearing Set - .030"	87790360 CFPN6333F 87790493 EBPN6337F	Same as Above
8	S.65227 Main Bearing Set - .040"	87790361 CFPN6333G 87790494 EBPN6337G	Same as Above

Sparex Replacement Spare Parts
for Ford/New Holland (65->)

Crankshafts & Main Bearings (4 Cylinder)

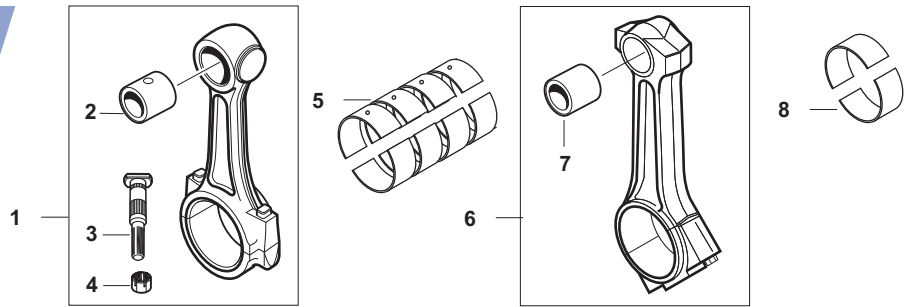


SPAREX No.	DESCRIPTION	EQUIVALENT	TRACTOR MODEL
9	S.62068 Seal - Front Crankshaft	98461684 40101331	4330 Vineyard, 4430 Orchard, 4835, 5635, 6635, 7635, TN65F, TN75F, TN90F
10	S.59052 Crankshaft	98451529 4785110	4330 Vineyard, 4835, 5635, 6635, 7635, TN65F, TN75F, TN90F
11	S.59075 Gasket - Rear Crankshaft Seal	4849994 4657434	Same as Above
12	S.62073 Seal - Rear Crankshaft (135 x 114 x 12mm)	98461686 40101341	Same as Above
13	S.59077 Seal Retainer	4781935 98489586	4330 Vineyard, 4835, 5635, 6635, 7635, TN65F, TN75F, TN90F
14	S.62055 Ring Gear	4602143	Same as Above
15	S.62049 Main Bearing - Standard (1 pair, 4 Required)	1930176	4330 Vineyard, 4430 Orchard, 4835, 5635
15	S.62345 Main Bearing - .010" (1 pair, 4 Required)	1930177	4330 Vineyard, 4430 Orchard, 4835, 5635
15	S.62454 Main Bearing - .020" (1 pair, 4 Required)	1930178	4330 Vineyard, 4430 Orchard, 4835, 5635
16	S.62053 Thrust Washers - Standard (2 pair)	1901385	4330 Vineyard, 4430 Orchard, 4835, 5635, 6635, 7635, TN65F, TN75F, TN90F
16	S.58945 Thrust Washers - .010" (2 pair)	1901386	4330 Vineyard, 4430 Orchard, 4835, 5635, 6635, 7635, TN65F, TN75F, TN90F
17	S.66483 Balancer Assembly (12.5mm wide Gear Teeth)		(4 Cylinder Engines ->8/86)

These parts are Sparex parts and are not manufactured by the Original Equipment Manufacturer. Original Manufacturers' names, part numbers and descriptions are quoted for reference purposes only and are not intended to indicate or suggest that our replacement parts are made by the OEM.

Sparex Replacement Spare Parts for Ford/New Holland (65->)

Connecting Rods & Bearings (4 Cylinder)

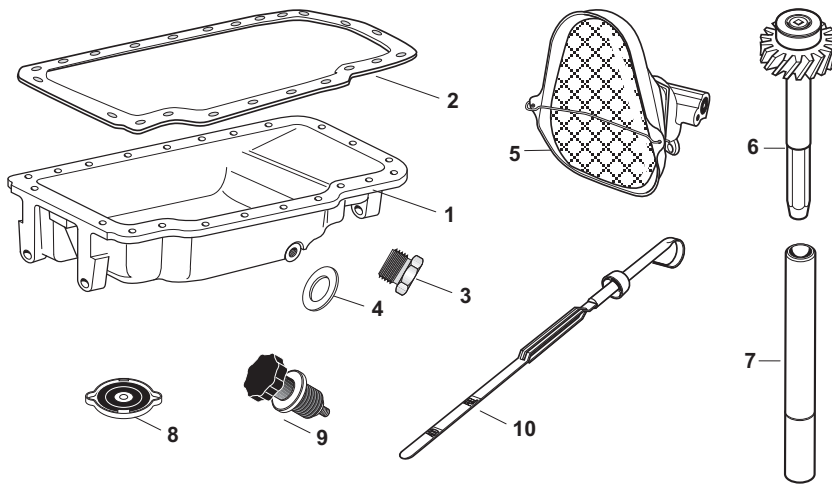


SPAREX No.	DESCRIPTION	EQUIVALENT	TRACTOR MODEL
1	S.66043 Connecting Rod Assembly (36mm Journal) (1.50"/38mm Pin)	81875622 F2NN6200BA E9NN6200AB E9NN6200CA E3HN6200AC E4NN6200AB C7NN6200A	5000, 5600, 5900, 6600, 6700, (5610, 6610, 6710 ->8/90), Ind. (555C less Turbo ->8/90), 5500, 5550, 650, 655, (655C less Turbo ->8/90), 6500
2	S.65237 Bushing - Connecting Rod (1.50"/38mm Pin)	C5NE6207A	Same as Above
2	S.66044 Bushing - Connecting Rod (1.61"/41mm Pin)	C9NN6207C	7000, 7600, 7700, 7610, 7710, Ind. 750, 755, 755A (755B ->2/91), 7500
3	S.65979 Bolt - Connecting Rod	E9NN6214BA C5NE6214	5000, 7000, 5600, 5900, 6600, 6700, 7600, 7700, 5610, 6610, 6710, 710, 7710, Ind. (555C less Turbo ->8/90), 5500, 5550, 650, 655, 655A, (655C less Turbo ->8/90), 6500, 750, 755A, 755B, 7500
4	S.65978 Nut - Connecting Rod	390655S2 385279S2	Same as Above
5	S.65199 Bearing - Connecting Rod Set - Std. (36mm) (NOTE: Not to be used with 32mm Tapered Rods)	DFPN6211A/B	5000, 5600, 5900, 6600, 6700, (5610, 6610, 6710 ->8/90), Ind. (555C ->8/90), 5500, 5550, 650, 655, 655A, (655C ->8/90), 6500
5	S.65200 Bearing - Connecting Rod Set - .010" (36mm wide)	DFPN6211D	Same as Above
5	S.65201 Bearing - Connecting Rod Set - .020" (36mm wide)	DFPN6211E	Same as Above
5	S.65202 Bearing - Connecting Rod Set - .030" (36mm wide)	DFPN6211F	Same as Above
5	S.65203 Bearing - Connecting Rod Set - .040" (36mm wide)	DFPN6211G	Same as Above
5	S.66072 Bearing - Connecting Rod Set - Std. (32mm wide) (May be used in prior models if 32mm wide, tapered rods are used.)	FAPN6211G	(5900, 5610, 6610, 6710, 6810, 7610, 7710 9/90->), 5610S, 6610S, 7610S, 4830, 5030, Ind. (555C 9/90->), 555D, 575D, (655C 9/90->), 655D, 675D
5	S.66073 Bearing - Connecting Rod Set - .010" (32mm wide)	FAPN6211J	Same as Above
5	S.66074 Bearing - Connecting Rod Set - .020" (32mm wide)	FAPN6211K	Same as Above
5	S.66075 Bearing - Connecting Rod Set - .030" (32mm wide)	FAPN6211E	Same as Above
5	S.66076 Bearing - Connecting Rod Set - .040" (32mm wide)	FAPN6211F	Same as Above
5	S.65204 Bearing - Connecting Rod Set - Std. (36mm) (NOTE: Not to be used with 32mm Tapered Rods)	DGPN6211A/B	7000, 7600, 7700, (7610, 7710 ->3/90), Ind. (555C, 655C w/ Turbo ->3/90), 750, 755, 755A, (755B ->3/90), 7500
5	S.65205 Bearing - Connecting Rod Set - .010" (36mm wide)	DGPN6211C	Same as Above
5	S.65206 Bearing - Connecting Rod Set - .020" (36mm wide)	DGPN6211D	Same as Above
5	S.65207 Bearing - Connecting Rod Set - .030" (36mm wide)	DGPN6211E	Same as Above
5	S.65208 Bearing - Connecting Rod Set - .040" (36mm wide)	DGPN6211F	Same as Above
5	S.66534 Bearing - Connecting Rod Set - Std. (36mm) (NOTE: Not to be used with 32mm Tapered Rods)	FAPN6211S/T	5640, 6640
5	S.66535 Bearing - Connecting Rod Set - .010" (36mm wide)	FAPN6211C	Same as Above
5	S.66536 Bearing - Connecting Rod Set - .020" (36mm wide)	FAPN6211D	Same as Above
6	S.58941 Connecting Rod Assembly (38mm Pin)	98461751 4780624	4330 Vineyard, 4430 Orchard, 4835, 5635, 6635, TN65F, TN75F
7	S.62038 Bushing - Connecting Rod	4766404	Same as Above
8	S.62043 Bearing - Connecting Rod - Std. (1 pair)	1930181	Same as Above
8	S.62044 Bearing - Connecting Rod - .010" (1 pair)	1930182	Same as Above
8	S.62451 Bearing - Connecting Rod - .020" (1 pair)	1930183	Same as Above

These parts are Sparex parts and are not manufactured by the Original Equipment Manufacturer. Original Manufacturers' names, part numbers and descriptions are quoted for reference purposes only and are not intended to indicate or suggest that our replacement parts are made by the OEM.

Sparex Replacement Spare Parts for Ford/New Holland (65->)

Oil Pan, Pumps and Related Components (4 Cylinder)

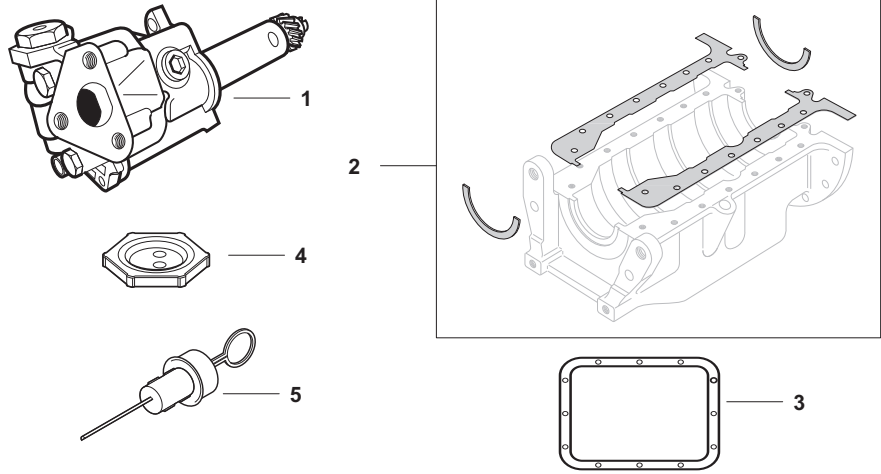


SPAREX No.	DESCRIPTION	EQUIVALENT	TRACTOR MODEL
1	S.60762 Oil Pan - Cast Iron (Uses S.65275 Plug and S.05718 Washer - Not Included)	87800105 E2NN6676AA	5000, 7000, 5600, 6600, 6700, 7600, 7700, 5610, 6610, 6710, 7610, 7710, Ind. 5500, 5550, 650, 6500, 750, 755, 755A, 755B, 7500
2	S.66456 Gasket - Oil Pan	87840324 E9NN6710AB	5000, 7000, 5600, 5900, 6600, 6700, 7600, 7700, 5610, 5610S, 6610, 6610S, 6710, 7610, 7610S, 7710, 4830, 5030, 5640, 6640, 7740, TS90, TS100, TS110, Ind. 555C, 555D, 575D, 5500, 5550, 650, 655, 655A, 655C, 655D, 675D, 6500, 750, 755, 755A, 755B
3	S.65276 Drain Plug (7/8"-16)	C5NE6730B	(5000 ->12/69), Ind. (5500 ->12/69)
3	S.65275 Drain Plug (3/4"-16)	C9NN6730B	(5000 1/70->), 7000, 5600, 5900, 6600, 6700, 7600, 7700, 5610, 6610, 6710, 7610, 7710, 4830, 5030, Ind. 555C, 555D, 575D, 5500, 5550, 650, 655, 655A, 655C, 655D, 6500, 750, 755, 755A, 755B, 7500
4	S.05719 Fiber Washer - Drain Plug (7/8")	EBU6734A	(5000 ->12/69), Ind. (5500 ->12/69)
4	S.05718 Fiber Washer (3/4")	C9NN6734A	(5000 1/70->), 7000, 5600, 5900, 6600, 6700, 7600, 7700, 5610, 6610, 6710, 7610, 7710, 4830, 5030, Ind. 555C, 555D, 575D, 5500, 5550, 650, 655, 655A, 655C, 655D, 6500, 750, 755, 755A, 755B, 7500
5	S.05937 Oil Pump	E1NN6600DD E1NN6600DC	5000, 5600, 5900, 6600, 6700, 4830, Ind. (555C, 555D less Turbo), 5500, 5550, 650, 6500
5	S.65270 Oil Pump	E1NN6600CC D5NN6600C	7000, 7600, 7700, 6610, 6710, 7610, 7710, Ind. (555C, 575D w/ Turbo), (655C, 655D less Turbo), (675, w/ Turbo), 750, 755, 755A, 755B, 7500
6	S.65267 Shaft & Gear - Oil Pump Drive	87800008 E9NN6A820AA	5000, 7000, 5600, 5900, 6600, 6700, 7600, 7700, 5610, 6610, 6710, 7610, 7710, 4830, 5030, Ind. 555C, 555D, 5500, 5550, 650, 655, 655A, 655C, 655D, 675D, 6500, 750, 755, 755A, 755B, 7500
7	S.65271 Shaft - Oil Pump Drive - Intermediate	C7NN6A605A	Same as Above
8	S.65953 Oil Filler Cap - Valve Cover	D0NN6766A	5000, 7000, Ind. 5500, 5550, 650, 6500, 750, 7500
9	S.65765 Oil Filler Cap - Timing Cover	83907851 D5NN6N609A	5600, 5900, 6600, 6700, 7600, 7700, 5610, 5610S, 6610, 6610S, 6710, 7610, 7610S, 7710, 4830, 5030, Ind. 555C, 555D, 575D, 650, 655, 655A, 655C, 655D, 675D, (6500 1/73->), 750, 755, 755A, 755B, (7500 1/73->)
10	S.65943 Dipstick	C5NE6750D	5000, 7000, Ind. 5500, 5550, 6500, 7500
10	S.65274 Dipstick	87801534 E9NN6750BA	5600, 5900, 6600, 6700, 7600, 7700, Ind. 555C, 555D, 575D, 575E, 655, 655A, 655C, 655D, 655E, 675D, 675E

F3

Sparex Replacement Spare Parts
for Ford/New Holland (65->)

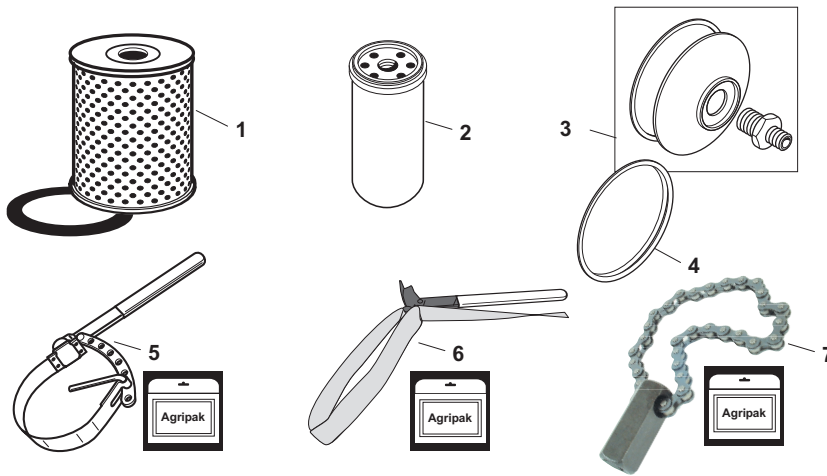
Oil Pan, Pumps and Related Components (4 Cylinder)



SPAREX No.	DESCRIPTION	EQUIVALENT	TRACTOR MODEL
1	S.62133 Oil Pump	4705827	4330 Vineyard, 4430 Orchard, 4835, 5635, TN65F, TN75F
2	S.62114 Gaskets & Seals - Oil Pan	1940004	4330 Vineyard, 4430 Orchard, 4835, 5635
3	S.62119 Gasket - Oil Pan Cover	98427452 4602299	4330 Vineyard, 4430 Orchard
4	S.62134 Oil Filler Cap	4232606	4330 Vineyard, 4430 Orchard, 4835, 5635, 6635, 7635
5	S.69820 Dipstick	4607956	4330 Vineyard, 4430 Orchard

Sparex Replacement Spare Parts
for Ford/New Holland (65->)

Engine Oil Filters and Related Components (4 Cylinder)

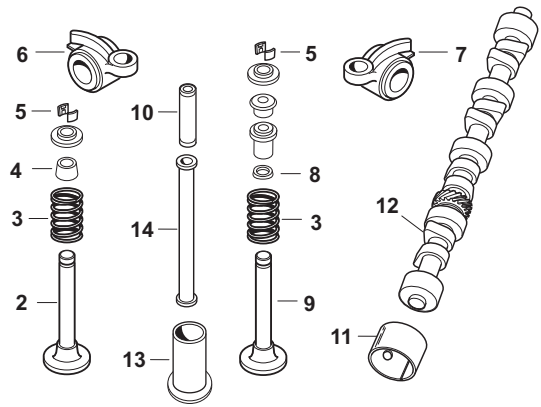
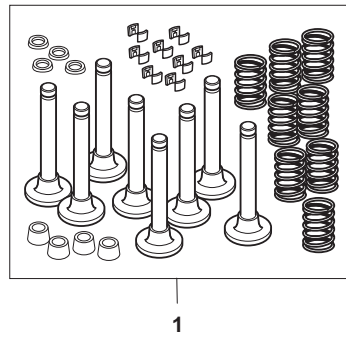


SPAREX No.	DESCRIPTION	EQUIVALENT	TRACTOR MODEL
1	S.76502 Engine Oil Filter - Cartridge Type (4.59" OD, .75" ID, 4.87" Height)	86546611 DGNP6731A	(5000 ->10/69), Ind. (5500 5550 ->10/69)
2	S.40538 Engine Oil Filter - Spin-on Type (3.77" OD, 3/4"-16 ID, 5" Height)	86546614 E7NN6714AA	(5000 11/69->), 5600, 5900, 6600, 6700, 5610, 6610, 6710, 5030, Ind. 555C, 555F, 575D, 655, 655A, 655C, 655D
2	S.62135 Engine Oil Filter - Spin-on Type (4.28" OD, 3/4"-16 UNF ID, 7.25" Height)	1909101	(4330 Vineyard Check Length), 4430 Orchard
2	S.62136 Engine Oil Filter - Spin-on Type (4.41" OD, 3/4"-16 UNF ID, 5.535" Height)	1909102	(4330 Vineyard Check Length), 4835, 5635, 6635, 7635
2	S.40539 Engine Oil Filter - Spin-on Type (3.81" OD, 3/4"-16 UNF ID, 6.78" Height)	86546609 D5NN6714A	7000, 7600, 7700, 7610, 7710, Ind. 750, 755, 755A, 755B, 7500
2	S.68723 Engine Oil Filter - Spin-on Type (3.67" OD, 1"-12 UNF ID, 6.88" Height)	F2NN6714AB	5610S, 6610S, 7610S, 5640, 6640, 7740, TS90, TS100, TS110, Ind. 775
3	S.66101 Adaptor - Cartridge to Spin-on Filter Includes: Adaptor, Stud & Seal	309825F	(5000 ->10/69), Ind. (5500, 5550 ->10/69)
4	S.66568 Seal - Filter Adaptor	D8NN6N818AA	Same as Above
5	S.05791 Adjustable Oil Filter Wrench - 1 pc Pack (3.5" - 4 1/2")		
5	S.08937 Adjustable Oil Filter Wrench - 1 pc Pack (4" - 6")		
6	S.14482 Filter Wrench - 1 pc Pack (Strap Length = 22.44")		Universal
7	S.12430 Chain Oil Filter Wrench - 1 pc (1/2" Drive)		
7	S.12431 Chain Oil Filter Wrench - 1 pc Pack (1/2" Drive)		

These parts are Sparex parts and are not manufactured by the Original Equipment Manufacturer. Original Manufacturers' names, part numbers and descriptions are quoted for reference purposes only and are not intended to indicate or suggest that our replacement parts are made by the OEM.

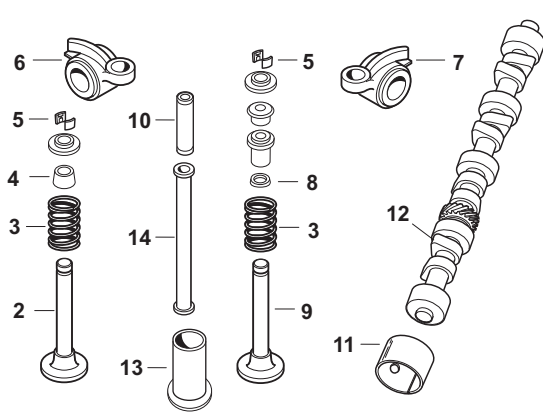
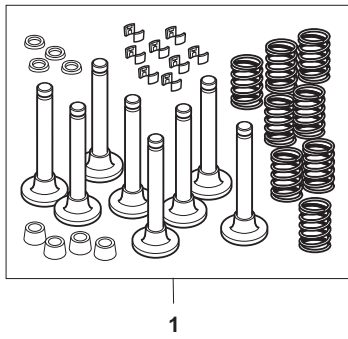
Sparex Replacement Spare Parts for Ford/New Holland (65->)

Valves, Camshafts (4 Cylinder)



SPAREX No.	DESCRIPTION	EQUIVALENT	TRACTOR MODEL
1	S.67039 Valve Train Kit - Contains: S.65701 Valve-In (Std) x 4, S.65712 Valve-Ex (Std) x 4, S.65711 Spring x 8, S.66758 Keeper x 16, S.66798 Seal-In x 4, S.66799 Seal-Ex x 4		5000, Ind. 5500, 5550, 650, 6500
1	S.67040 Valve Train Kit - Contains: S.65701 Valve-In (Std) x 4, S.65704 Valve-Ex (Std) x 4, S.65711 Spring x 8, S.66758 Keeper x 16, S.66798 Seal-In x 4, S.66799 Seal-Ex x 4		5600, 6600, 6700, (5610, 6610, 6710, 5900 ->10/91), Ind. 555, 555A, 555B, 655, 655A
1	S.67041 Valve Train Kit - Contains: S.65702 Valve-In (Std) x 4, S.65706 Valve-Ex (Std) x 4, S.65711 Spring x 8, S.66758 Keeper x 16, S.66798* (*except 7000) Seal-In x 4, S.66799 Seal-Ex x 4		7000, 7600, 7700, (7610, 7710 ->10/91), Ind. 750, 755, 755A, 755B, 7500
2	S.65701 Intake Valve (Standard Stem)	87800344 C5NN6507B D3NN6507A	5000, 5600, 5900, 6600, 6700, 5610, 6610, 6710, Ind. 5500, 5550, 655, 655A
2	S.65925 Intake Valve (.003" Oversize Stem)	87800345 C5NN6507C D3NN6507B	Same as Above
2	S.65929 Intake Valve (.015" Oversize Stem)	87800346 C5NN6507D D3NN6507C	Same as Above
2	S.65935 Intake Valve (.030" Oversize Stem)	87800347 C5NN6507E D3NN6507D	Same as Above
2	S.65702 Intake Valve (Standard Stem - 30° Angle)	87800386 D8NN6507AB D8NN6507AA	7000, 7600, 7700, 7610, 7710, 4830, 5030, Ind. 555C, 555D, 575D, 655C, 655D, 675D, 750, 755, 755B, 7500
2	S.65926 Intake Valve (.003" Oversize Stem)	87800387 D8NN6507BB D8NN6507BA	Same as Above
2	S.65931 Intake Valve (.015" Oversize Stem)	87800388 D8NN6507CB D8NN6507CA	Same as Above
2	S.65932 Intake Valve (.030" Oversize Stem)	87800389 D8NN6507DB D8NN6507DA	Same as Above
2	S.62057 Intake Valve (Standard Stem)	4824417	4430 Orchard, 4835, 5635, 6635, 7635, TN65F, TN75F, TN90F
2	S.66540 Intake Valve (Standard Stem)	E9NN6507AC	5610S, 6610S, 5640, 6640, TS90, Ind. 555E, 655E
2	S.66541 Intake Valve (Standard Stem)	82850530 F0NN6507AD	7610S, 7740, 575E, 675E, 775
3	S.65711 Valve Spring	D6NN6513A	5000, 7000, 5600, (5900 ->9/91), 6600, 6700, 7600, 7700, (5610, 6610, 6710, 7610, 7710, 4830 ->9/91), Ind. (555C ->9/91), 5500, 5550, 650, 655, 655A, (655C ->9/91), 6500, 750, 755, 755A, 755B, 7500
3	S.66028 Valve Spring	E9NN6513BA	(5900, 5610, 6610, 6710, 7610, 7710 10/91->), 5610S, 6610S, 7610S, (4830 10/91->), 5030, 5640, 6640, 7740, TS90, TS100, TS110, Ind. (555C 10/91->), 555D, 555E, 575D, 575E, (655 10/91->), 655D, 655E, 675D, 675E, 775
3	S.62066 Valve Spring	4780108	4330 Vineyard, 4430 Orchard, 4835, 5635, 6635, 7635, TN65F, TN75F, TN90F

These parts are Sparex parts and are not manufactured by the Original Equipment Manufacturer. Original Manufacturers' names, part numbers and descriptions are quoted for reference purposes only and are not intended to indicate or suggest that our replacement parts are made by the OEM.



Sparex Replacement Spare Parts
for Ford/New Holland (65->)

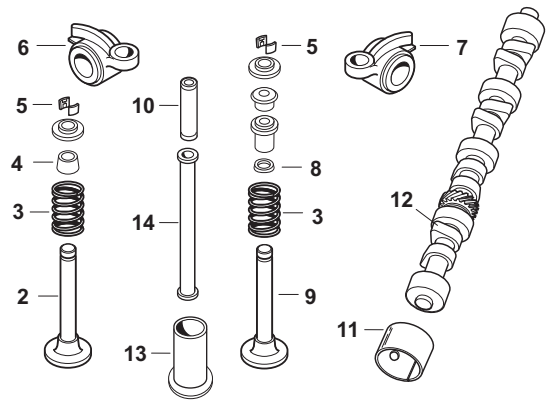
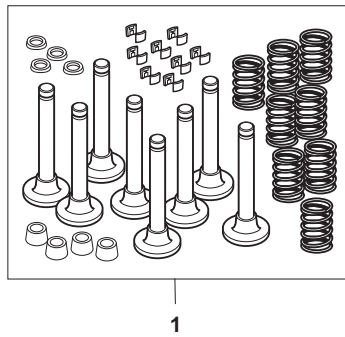
Valves, Camshafts (4 Cylinder)

SPAREX No.	DESCRIPTION	EQUIVALENT	TRACTOR MODEL
4	S.66798 Seal - Intake Valve	C5NE6571A	5000, 5600, (5900 ->9/91), 6600, 6700, 7600, 7700, (5610, 6610, 6710, 7610, 7710 ->9/91), 4830, (5030 ->9/91), Ind. (555C ->9/91), 5500, 5550, 650, 655, 655A, (655C ->9/91), 6500
5	S.66758 Key - Valve Lock (Order 2 per Valve)	81876796 C1AE6518A	4 Cylinder (except 4330 Vineyard, 4430 Orchard, 4835, 5635, 6635, 7635, TN65F, TN75F, TN90F)
5	S.59051 Key - Valve Lock (Order 2 per Valve)	14196670	4330 Vineyard, 4430 Orchard, 4835, 4635, 6635, 7635, TN65F, TN75F, TN90F
6	S.66780 Rocker Arm - Intake Only	83956710 D9NN6529AB	5000, 5600, 5900, 6600, 6700, 5610, 6610, 6710, 5610S, 6610S, 7610S, 4830, 5030, 5640, 6640, 7740, TS90, TS100, TS110, Ind. 555C, 555D less Turbo, 555E, 5500, 5550, 650, 655, 655A, 655C, 655D, 655E, 675D, 675E, 6500, 775
7	S.66781 Rocker Arm - Exhaust Only	81804316 C5NE6529A	5000, 5600, 5900, 6600, 6700, 5610, 6610, 6710, 5610S, 6610S, 7610S, 4830, 5030, 5640, 6640, 7740, TS90, TS100, TS110, Ind. (555C, 555D less Turbo), 555E, (575 less Turbo), 575E, 5500, 5550, 650, 655, 655A, (655C, 655D less Turbo), 655E, (675D less Turbo), 675E, 775
8	S.66799 Seal - Exhaust Valve	C5NE6571B	5000, 7000, 5600, (5900 ->9/91), 6600, 6700, 7600, 7700, (5600, 6610, 6710, 7610, 7710, 4830 ->9/91), Ind. (555C ->9/91), 5500, 5550, 650, 655, 655A, (655C ->9/91), 6500, 750, 755, 755S, 755B, 7500
9	S.65712 Exhaust Valve (Standard Stem)	C7NN6505E	5000, Ind. 5500, 5550, 650, 6500
9	S.65924 Exhaust Valve (.003" Oversize Stem)	C7NN6505F	Same as Above
9	S.65927 Exhaust Valve (.015" Oversize Stem)	C7NN6505G	Same as Above
9	S.65940 Exhaust Valve (.030" Oversize Stem)	C7NN6505H	Same as Above
9	S.65704 Exhaust Valve (Standard Stem)	D3NN6505A E9NN6505AA	(5600 ->9/80)
9	S.65936 Exhaust Valve (.003" Oversize Stem)	87800337 D3NN6505B	Same as Above
9	S.65937 Exhaust Valve (.015" Oversize Stem)	87800338 D3NN6505C	Same as Above
9	S.65938 Exhaust Valve (.030" Oversize Stem)	87800339 D3NN6505D	Same as Above
9	S.65706 Exhaust Valve (Standard Stem)	D8NN6505AA	7000, (5600 10/80->), 6600, 6700, 7600, 7700, 5610, 6610, 6710, 7610, 7710, 4830, 5030, Ind. 555C, 555D, 575D, (655, 655A w/ Headland Pistons), 655C, 655D, 675D, 750, 755, 755A, 755B, 7500
9	S.65923 Exhaust Valve (.003" Oversize Stem)	D8NN6505BA	Same as Above
9	S.65928 Exhaust Valve (.015" Oversize Stem)	D8NN6505CA	Same as Above
9	S.65939 Exhaust Valve (.030" Oversize Stem)	D8NN6505DA	Same as Above
9	S.66543 Exhaust Valve - Standard Stem	81865085 E9NN6505EC	5610S, 6610S, 5640, 6640, TS90, Ins. 555E, 655E
9	S.66542 Exhaust Valve - Standard Stem	82850523 F0NN6505AD	7740, TS100, TS110, Ind. 575E, 675E, 775
9	S.62060 Exhaust Valve	99432718 4784889	4330 Vineyard, 4430 Orchard
10	S.62062 Valve Guide (Intake/Exhaust - Std)	4802126	4330 Vineyard, 4430 Orchard, 4835, 5635, 6635, 7635, TN65F, TN75F, TN90F

These parts are Sparex parts and are not manufactured by the Original Equipment Manufacturer. Original Manufacturers' names, part numbers and descriptions are quoted for reference purposes only and are not intended to indicate or suggest that our replacement parts are made by the OEM.

Sparex Replacement Spare Parts
for Ford/New Holland (65->)

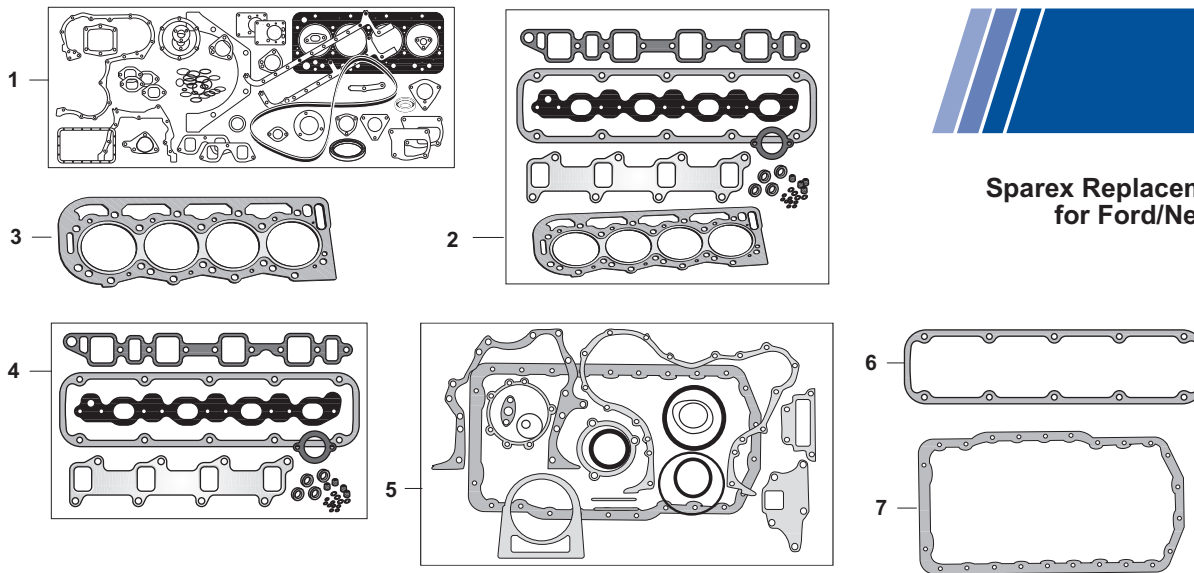
Valves, Camshafts (4 Cylinder)



SPAREX No.	DESCRIPTION	EQUIVALENT	TRACTOR MODEL
11	S.65872 Bushing - Camshaft (5 per Engine)	878200499 C5NE6261B	5000, 7000, 5600, 5900, 6600, 6700, 7600, 7700, 5610, 5610S, 6610, 6610S, 6710, 7610, 7610S, 7710, 4830, 5030, 5640, 6640, 7740, Ind. 555C, 555D, 575D, 5500, 5550, 650, 655, 655A, 655C, 655D, 675D, 6500, 750, 755, 755A, 755B, 7500
11	S.62121 Bushing Set - Camshaft (Set of 3)	4718618 4603449 4718619 4603450 4718620 4603451	4330 Vineyard, 4430 Orchard, 4835, 5635, 6635, 7635, TN65F, TN75F, TN90F
12	S.65239 Camshaft	E6TN6250AA	5000, 7000, 5600, 5900, 6600, 6700, 7600, 7700, 5610, 6610, 6710, 7610, 7710, 4830, 5030, Ind. 555C, 555D, 575D, 650, 655, 655A, 655C, 655D, 675D, 6500, 750, 755, 755A, 755B, 7500
13	S.65306 Tappet (2.06") Use w/ 12.17" Push Rod Diesel Only	83946434 C7NN6500B	(5000 8/65->), 7000, 5600, 5900, 6600, 6700, 7600, 7700, 5610, 5610S, 6610, 6610S, 6710, 7610, 7610S, 7710, 4830, 5030, 5640, 6640, 7640, TS90, TS100, TS110, Ind. 555C, 555D, 555E, 575D, 575E, 5500, 5550, 650, 655, 655A, 655C, 655D, 655E, 675D, 675E, 750, 755, 755A, 755B, 7500
14	S.66363 Push Rod (12.17" Long)	C5NE6567B	(5000 8/65-> Diesel), 7000, 5600, 5900, (6600, 6700 Diesel only), 7600, 7700, 5610, 6610, 6710, 7610, 7710, 4830, 5030, Ind. 555C, 555D, 575D, 5500, 5550, 655, 655A, 655C, 655D, 675D, 6500, 750, 755, 755A, 755B, 7500

Sparex Replacement Spare Parts for Ford/New Holland (65->)

Gaskets (4 Cylinder)

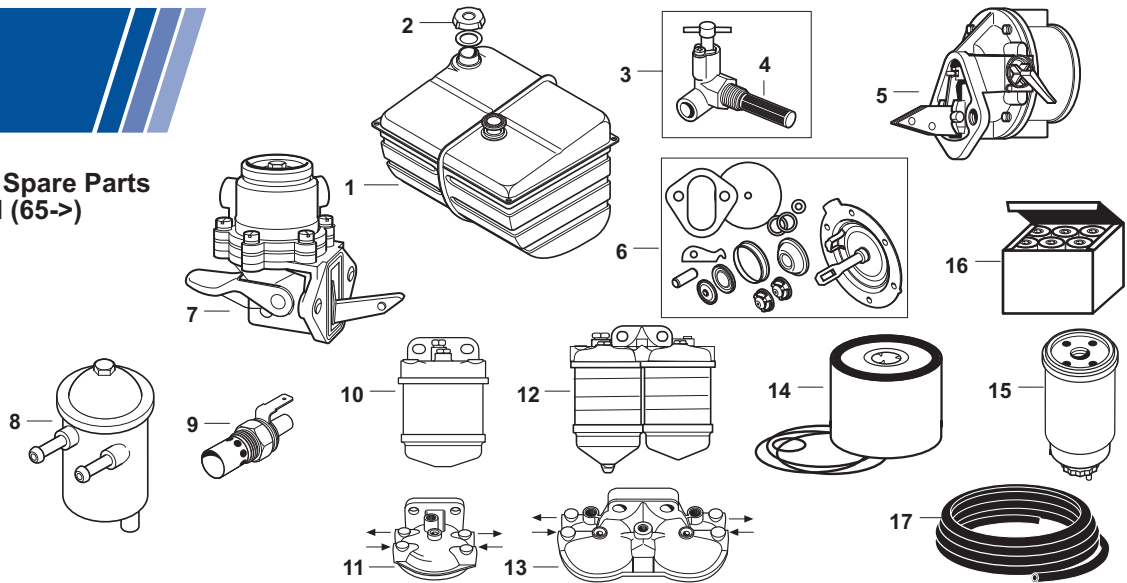


Models	1-Full Set	2-Top Set	3-Head Gasket	4-Service Set	5-Bottom Set	6-Rocker Cover	7-Oil Pan Gasket
(5000 ->3/68), (5600 ->9/80), Ind. (5500, 5550 ->5/68)		S.65296 CFPN6008C D3NN6051F	S.66353 82845203 D3NN6051F	S.65993 CFPN6008C	S.65300 CFPN6A008C	S.65764 C7NN6584C	S.66456 87840324 C9NN6710D
(5000 4/86->), 7000, (5600 10/80->), (5900 ->9/89), 6600, 6700, 7600, 7700, (5610, 6610, 6710, 7610, 7710 ->9/89), Ind. (555C ->9/89), (5500, 5550 4/68->), 650, 655, 655A, (655C->9/89), 6500, 750, 755, 755A, (755B ->9/89), 7500		S.65297 CFPN6008C F1NN6051BA	S.65847 87800517 F1NN6051BA E8NN6051BA	S.65993 CFPN6008C	S.65300 CFPN6A008C	S.65764 C7NN6584C	S.66456 87840324 C9NN6710D
(5900, 6610, 6710, 6810, 7610, 7710 10/89->)		S.65297 CFPN6008C F1NN6051BA (Rocker Cover Gasket won't fit)	S.65847 87800517 F1NN6051BA E8NN6051BA	S.65993 CFPN6008C (Rocker Cover Gasket won't fit)	S.65300 CFPN6A008C		S.66456 87840324 C9NN6710D
4830, 5030			S.65847 87800517 F1NN6051BA E8NN6051BA				S.66456 87840324 C9NN6710D
4835	S.62085* 1909563	S.62104 1930260				S.62126 4845136	S.62114 1940004
5635	S.62105* 1930248	S.62106 1930249				S.62126 4845136	S.62114 1940004
5610S, 6610S, 7610S, 5640, 6640 7740, TS90, TS100, TS110	*less Crankshaft Seals		S.65847 87800517 F1NN6051BA E8NN6051BA	S.66544 81878059 FDPN6008A	S.66545 81878060 FDPN6A008A		

These parts are Sparex parts and are not manufactured by the Original Equipment Manufacturer. Original Manufacturers' names, part numbers and descriptions are quoted for reference purposes only and are not intended to indicate or suggest that our replacement parts are made by the OEM.

Sparex Replacement Spare Parts for Ford/New Holland (65->)

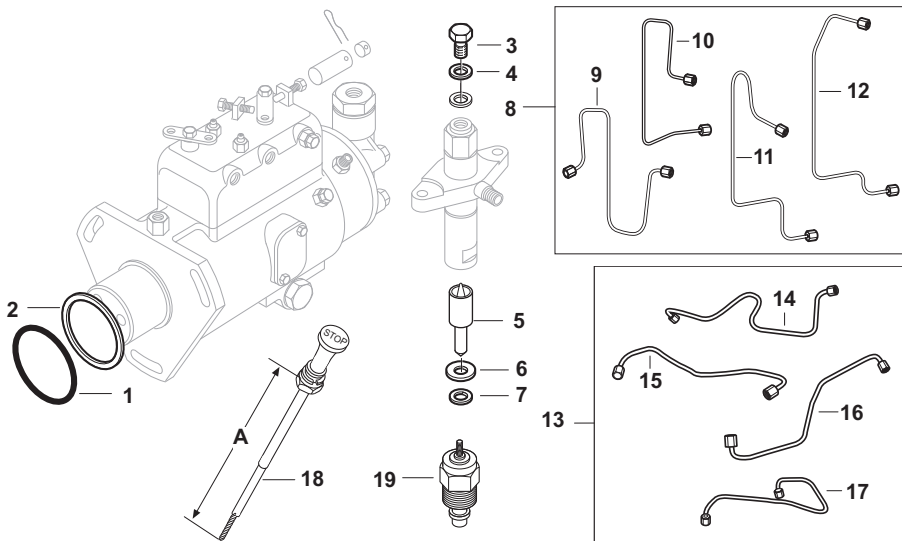
Fuel Tanks, Lift Pumps and Filters (4 Cylinder)



SPAREX No.	DESCRIPTION	EQUIVALENT	TRACTOR MODEL
1	S.61500 Fuel Tank - less Cap (for Lock Ring type Sender)	E3NN9002AB C5NN9002AC	(5000, 7000 except Rowcrop), (5600, 6600, 7600 less Cab ->4/76), (5610, 6610, 7610 less Cab ->84)
2	S.65819 Cap - Fuel Tank w/ 2 Lugs	E7NN9030AA	Most Models
3	S.65286 Shut-Off Assembly - Economy	E2NN9N024AA D8NN9N024AB	Most Models
3	S.65714 Shut-Off Assembly - Brass Stem	E2NN9N024AA D8NN9N024AB	Most Models
4	S.65287 Filter - Fuel Shut-Off	D9NN9N187AA	Most Models
5	S.40562 Lift Pump w/ Simms Injector Pump	D8NN9350AB	5000, 7000, 5900, 6600, 6700, 7600, 7700, 6610, 6710, 7610, 7710, Ind. 5500, 5550, 650, 655, 655A, 6500, 750, 755, 755A, 755B, 7500
6	S.65285 Repair Kit - Lift Pump w/ Simms Injector Pump	693F9K340AA	Same as Above
7	S.63039 Lift Pump	4757883	4330 Vineyard, 4430 Orchard, 4835, 5635, 6635, 7635
8	S.62678 Reservoir - Thermostart	5135040	4330 Vineyard, 4430 Orchard
9	S.40627 Heater Plug	C5NE9A436A	5000, 7000, 5600, 5900, 6600, 6700, 7600, 7700, (5610, 6610, 6710, 7610, 7710 ->10/82), Ind. 5500, 5550, (655 ->10/82)
9	S.62361 Heater Plug	5161845	4330 Vineyard, 4430 Orchard, 4835, 5635, 6635, 7635, TN65F, TN75F, TN90F
10	S.60425 Fuel Filter Assembly - CAV/Simms type (1/2" x 20 UNF Ports)		Outer Ports "In", Inner Ports "Out"
11	S.42127 Filter Head - Bare Casting - CAV/Simms type (1/2" x 20 UNF Ports)		Outer Ports "In", Inner Ports "Out"
12	S.60426 Fuel Filter Assembly - CAV/Simms type (1/2" x 20 UNF Ports)		Outer Ports "In", Inner Ports "Out"
13	S.42128 Filter Head - Bare Casting - CAV/Simms type (1/2" x 20 UNF Ports)		Outer Ports "In", Inner Ports "Out"
14	S.40542 Fuel Filter - CAV/Simms type (3.46" OD, .75" ID, 2.85" Height)	83937061 EDPN9N074AA CAV7111/296	
14	S.40543 Fuel Filter - CAV/Simms type (3.50 OD, .75" ID, 4.44" Height)	D8NN9176AA CAV7111/796	
15	S.76328 Fuel Filter - Bosch type - Thread-on (3.46" OD, M16x1.5" ID, 6.10" Height)	1930010	4330 Vineyard, 4430 Orchard, 4835, 5635, 6635, 7635, TN65F, TN75F, TN90F
16	S.00296 Fuel Filters - Box of 6 - CAV/Simms type (3.46" OD, .75" ID, 2.85" Height)	83937061 EDPN9N074AA CAV7111/296	
17	S.19156 Fuel/Leak-off Hose (4mm/.157" ID, 50' Spool)		
17	S.19157 Fuel/Leak-off Hose (5mm/.197" ID, 50' Spool)		

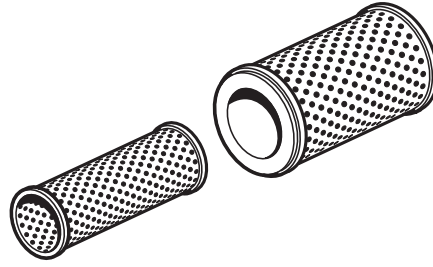
These parts are Sparex parts and are not manufactured by the Original Equipment Manufacturer. Original Manufacturers' names, part numbers and descriptions are quoted for reference purposes only and are not intended to indicate or suggest that our replacement parts are made by the OEM.

Fuel System and Related Components (4 Cylinder)



SPAREX No.	DESCRIPTION	EQUIVALENT	TRACTOR MODEL
1	S.01949 O-Ring - CAV Injector Pump to Engine	510185 87071S94	
2	S.41487 Seal - CAV Injector Pump	E2NN9G501AA C5NE9G501A	
3	S.66006 Bolt - Leak-off	D1NN9R523A	(5000, 7000, 5600, 5900, 6600, 6700, 5610, 6610, 6710, 7610, 7710, 5500, 5550, 555C, 555D, 575D, 650, 6500, 655, 655A ->8/87), (655C, 655D, 675D, 750, 7500, 755, 755A, 755B ->4/87)
4	S.11113 Washer - Leak-off Line (3/8" ID, 7/16" OD)	380428S	
5	S.62358 Nozzle - Injector	4802393 4792443	4330 Vineyard, 4430 Orchard, 4835
5	S.62359 Nozzle - Injector	99474915 4800030	5635
6	S.66776 Cork Seal - Injector (Pack of 10)	81806277 C5NE9F596A	Most Models
7	S.11112 Sealing Washer - Injector (7/16" ID, 11/16" OD)	C5NE9E529A	
8	S.66018 Injector Line Set w/ Simms Inline Pump		5000, 7000, 5900, Ind. 5500, 5550, 6500, 7500
9	S.65802 Injector Line - #1 Cylinder	C5NE9A555F	Same as Above
10	S.65803 Injector Line - #2 Cylinder	C5NE9A556F	Same as Above
11	S.65804 Injector Line - #3 Cylinder	C5NE9A557G	Same as Above
12	S.65805 Injector Line - #4 Cylinder	C5NE9A558B	Same as Above
13	S.66005 Injector Line Set		5600, (6600, 6700 ->12/76), 5610, (6610 10/83-84), Ind. (650 ->12/77)
14	S.65999 Injector Line - #1 Cylinder	D9NN9A555BA	Same as Above
15	S.66000 Injector Line - #2 Cylinder	D9NN9A556BA	Same as Above
16	S.66001 Injector Line - #3 Cylinder	D9NN9A557BA	Same as Above
17	S.66002 Injector Line - #4 Cylinder	D9NN9A558AA	Same as Above
18	S.67060 Shut-off Cable (A=55") No Cutting Required	E5NN9C331EA	5000, 7000, 5600, 5900, 6600, 6700, 7600, 7700, 5610, 6610, 6710, 7610, 7710, 4830, 5030
18	S.65746 Shut-off Cable (A=63 1/4")	E5NN9C331DB	Ind. 650, 655, 655A, 655B, 6500
18	S.65747 Shut-off Cable (A=66") Cut to Fit		Universal
18	S.14551 Shut-off Cable (A=85 1/2") Cut to Fit		Universal
19	S.59168 Shut-off Solenoid	8190393	4330 Vineyard, 4430 Orchard, 4835

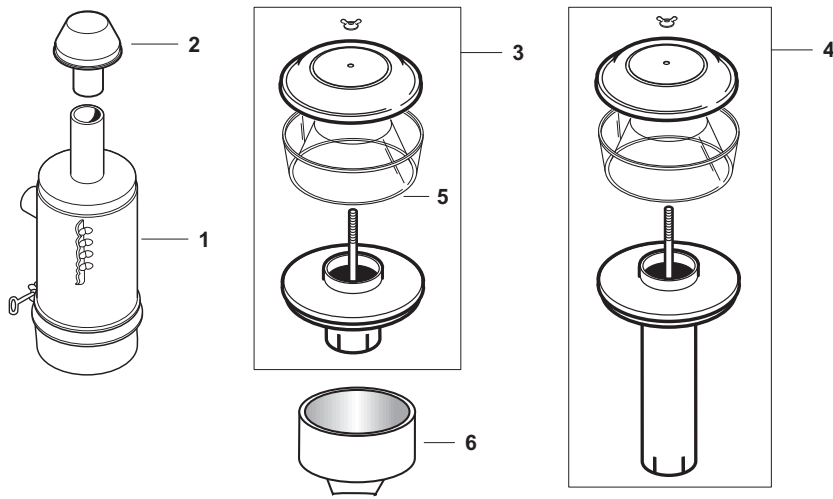
Sparex Replacement Spare Parts for Ford/New Holland (65->)



Air Filters (4 Cylinder - Dry)

TRACTOR MODEL	OUTER	DIMENSION	INNER	DIMENSION
(5500 Outer Only), 6500	S.76522 E6NN9A641AB	(4.46"OD, 2.28"ID, 12.50" Ht)	S.76547 E6NN9R500DA D2NN9R500A	(2.11"OD Top, 2.54"OD Bot, .33"ID Top, 1.87"ID Bot 10.31" Ht)
750, 7500	S.76516 E9NN9601AA	(7.38"OD Top, 6.69"OD Bot, .50"ID Top, 3.76"ID Bot, 15.44" Ht)	S.65808 D1NN9R500A	(3.62"OD, .44"ID Top, 3.06"ID, 13.81" Ht)
(5550 Outer Only), 650	S.76522 E6NN9A641AB	(4.46"OD, 2.28"ID, 12.50" Ht)	S.76547 E6NN9R500DA D2NN9R500A	(2.11"OD Top, 2.54"OD Bot, .33"ID Top, 1.87"ID Bot 10.31" Ht)
555C, 555D, 655, 655A, 655B, 655C, 655D, 755, 755A, 755B	S.76516 E9NN9601AA	(7.38"OD Top, 6.69"OD Bot, .50"ID Top, 3.76"ID Bot, 15.44" Ht)	S.65808 D1NN9R500A	(3.62"OD, .44"ID Top, 3.06"ID, 13.81" Ht)
555E, 655E	S.76788 1960765	(8.30"OD Top, 7.79"OD Bot, 3.42"ID 15.47" Ht)	S.76284 1909964	(6.09"OD, 7.66" OD Bot, .64"ID Top, 3.47" ID Bot, 15.38" Ht)
575D, 675D,	S.76516 E9NN9601AA	(7.38"OD Top, 6.69"OD Bot, .50"ID Top, 3.76"ID Bot, 15.44" Ht)	S.65808 D1NN9R500A	(3.62"OD, .44"ID Top, 3.06"ID, 13.81" Ht)
575E, 675E	S.76788 1960765	(8.30"OD Top, 7.79"OD Bot, 3.42"ID 15.47" Ht)	S.76284 1909964	(6.09"OD, 7.66" OD Bot, .64"ID Top, 3.47" ID Bot, 15.38" Ht)
7000, 7600, 7700	S.76516 E9NN9601AA	(7.38"OD Top, 6.69"OD Bot, .50"ID Top, 3.76"ID Bot, 15.44" Ht)	S.65808 D1NN9R500A	(3.62"OD, .44"ID Top, 3.06"ID, 13.81" Ht)
(5600, 6600, 6700 4/76->)	S.76524 E9NN9B618AA D6NN9601B	(5.34"OD Top, 44"ID Top, 3.06"ID Bot, 15.00" Ht)	S.76511 86525008 D6NN9R500B	(2.93"OD, .49"ID Top, 2.46"ID Bot, 13.37" Ht)
5610	S.76524 E9NN9B618AA D6NN9601B	(5.34"OD Top, 44"ID Top, 3.06"ID Bot, 15.00" Ht)	S.76511 86525008 D6NN9R500B	(2.93"OD, .49"ID Top, 2.46"ID Bot, 13.37" Ht)
6610, 6710, 7610, 7710, (5610S, 6610S, 7610S w/ Steel Air Cleaner Case)	S.76516 E9NN9601AA	(7.38"OD Top, 6.69"OD Bot, .50"ID Top, 3.76"ID Bot, 15.44" Ht)	S.65808 D1NN9R500A	(3.62"OD, .44"ID Top, 3.06"ID Bot, 13.81" Ht)
5030	S.76524 E9NN9B618AA D6NN9601B	(5.34"OD Top, 44"ID Top, 3.06"ID Bot, 15.00" Ht)	S.76511 86525008 D6NN9R500B	(2.93"OD, .49"ID Top, 2.46"ID Bot, 13.37" Ht)
(5610S, 6610S, 7610S w/ Donaldson Plastic Air Cleaner)	S.76873 82981152	(6.45"OD Top, ID Top Closed, 3.61"ID Bot, 13.91" Ht)	S.76747 82981153	(3.40"OD, 3.63"OD Bot, ID Top closed, 2.50"ID Bot, 13.36" Ht)
4835, 5635	S.76875 1930587	(5.45"OD, 3.20"ID Bot, 12.91" Ht)	S.76725 1930588	(3.32"OD, 2.55"ID, 12.67" Ht)
6635, 7635	S.76873	(6.45"OD Top, ID Top Closed, 3.61"ID Bot, 13.91" Ht)	S.76747	(3.40"OD, 3.63"OD Bot, ID Top closed, 2.50"ID Bot, 13.36" Ht)
5640, 6640, 7740, TS90, TS100, TS110	S.76549 82011402 82008600 E9NN9B618BA	(8.62"OD Top, 7.43"OD Bot, .43"ID Top, 3.77"ID Bot, 13.05" Ht)	S.76512 82008601 E9NN9R500AB	(3.59"OD Top, 4.33"OD Bot, .43"ID Top, 3.00"ID Bot, 11.42" Ht)

These parts are Sparex parts and are not manufactured by the Original Equipment Manufacturer. Original Manufacturers' names, part numbers and descriptions are quoted for reference purposes only and are not intended to indicate or suggest that our replacement parts are made by the OEM.



F3

Sparex Replacement Spare Parts
for Ford/New Holland (65-➔)

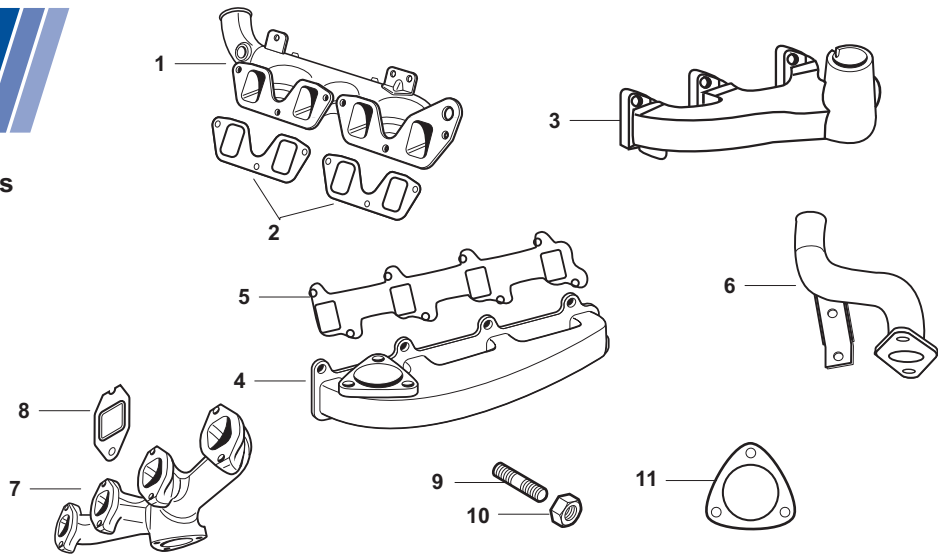
Air Cleaners (4 Cylinder)

SPAREX No.	DESCRIPTION	EQUIVALENT	TRACTOR MODEL
1	S.61385 Air Cleaner - Oil Bath (7" Dia, 2 1/4" Intake)	C5NE9600E	5000
1	S.66709 Air Cleaner - Oil Bath (7 3/4" Dia, 2 1/2" Intake)	D3NN9600F	5600, 5900, 6600
2	S.61868 Pre-Cleaner Cap (Fits 2 1/4" Intake, 6 3/4" Overall)	C5NN9A660A	
2	S.66877 Pre-Cleaner Cap (Fits 2 1/2" Intake, 8" Overall)	D3NN9A660D	
3	S.65719 Pre-Cleaner Assembly (2 1/4" Inlet, 7" Bowl)		
3	S.63379 Pre-Cleaner Assembly (2 1/2" Inlet, 7" Bowl)		
3	S.41393 Pre-Cleaner Assembly (3" Inlet, 7" Bowl)		
3	S.41395 Pre-Cleaner Assembly (3" Inlet, 10" Bowl)		
4	S.67049 Pre-Cleaner Assembly (2 1/4" Inlet, 7" Bowl) (9 1/2" Extension Pipe)		
5	S.41397 Bowl - Quality Plastic (7")	C0NN9A663A	
5	S.41405 Bowl - Economy Plastic (7")	C0NN9A663A	
5	S.41398 Bowl - Quality Plastic (10")	82980264 C9NN9A660C	
5	S.41403 Bowl - Economy Plastic (10")	C9NN9A660C	
6	S.75832 Dust Collector - Rubber (Fits 3" Pipe)	F0NN9C673AA D2NN9C673B	

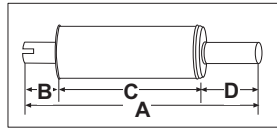
These parts are Sparex parts and are not manufactured by the Original Equipment Manufacturer. Original Manufacturers' names, part numbers and descriptions are quoted for reference purposes only and are not intended to indicate or suggest that our replacement parts are made by the OEM.

Sparex Replacement Spare Parts
for Ford/New Holland (65->)

Manifolds and Exhaust System (4 Cylinder)

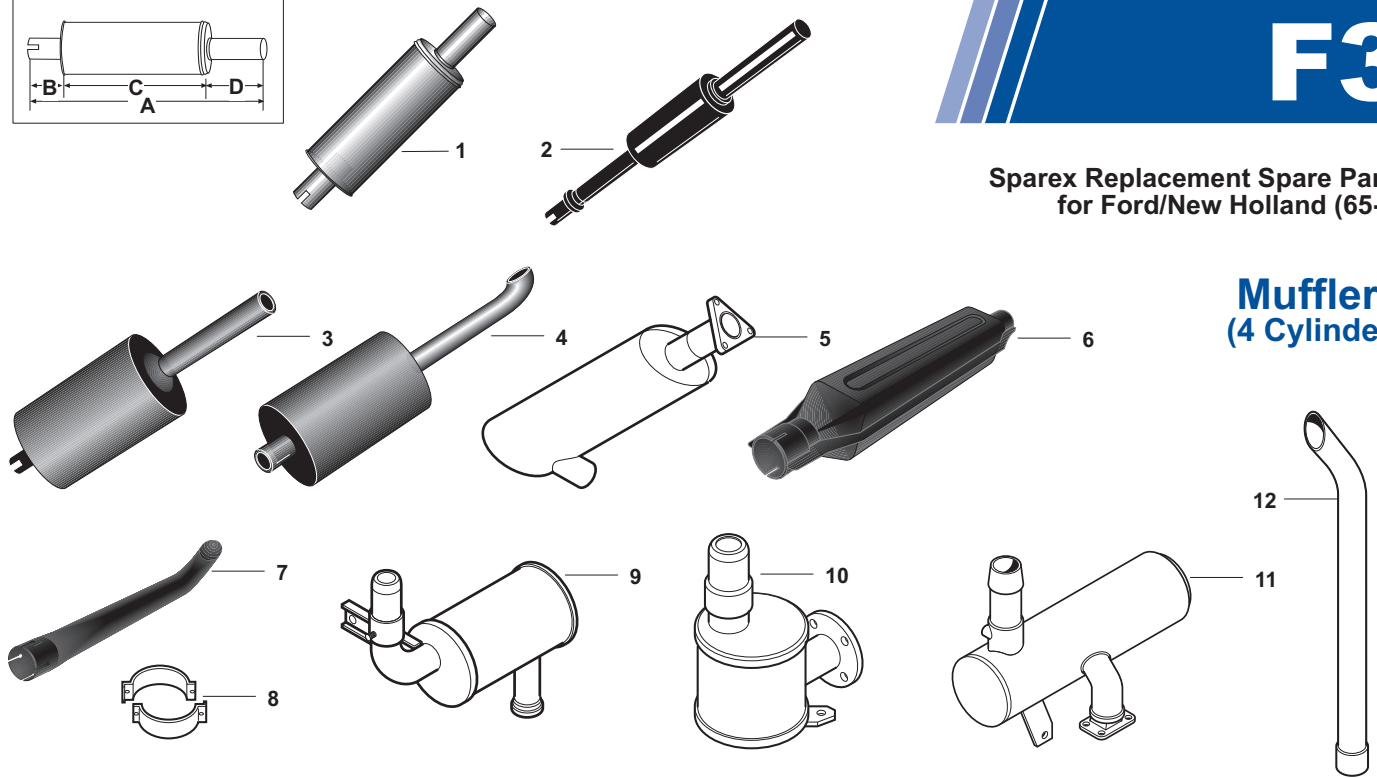


SPAREX No.	DESCRIPTION	EQUIVALENT	TRACTOR MODEL
1	S.62158 Intake Manifold	4602348	4330 Vineyard, 4430 Orchard
2	S.69823 Gasket - Double - Intake Manifold	4851921	4330 Vineyard, 4430 Orchard, 4835, 5635, 6635, 7635, TN65F, TN75F, TN90F
3	S.60647 Exhaust Manifold - Vertical	C5NE9430D	5000, 5900, Ind. 5500, 5550
4	S.65954 Exhaust Manifold - Non-Turbo Engines	D3NN9430B	(5600, 6600, 6700, 5610 ->1/83), 555C, 555D, 575D, 655, 655A, 655C, 655D, 675D
5	S.65947 Gasket - Exhaust Manifold Fits: S.60647, S.65954	E8NN9448BA C5NE9448B	5000, 7000, 5600, 5900, 6600, 6700, 7600, 7700, 5610, 6610, 6710, 7610, 7710, 4830, 5030, Ind. 555C, 555D, 575D, 5500, 5550, 650, 655, 655A, 655C, 655D, 675D, 6500, 750, 755, 755A, 755B, 7500
6	S.61783 Exhaust Pipe - Vertical	D6NN5246N	(5600, 6600, 5610 ->1/83), 655, 655A
7	S.62154 Exhaust Manifold	4606570	4330 Vineyard, 4430 Orchard, 4835, 5635
8	S.62446 Gasket - Exhaust Manifold to Head (4 Required)	98489690 4601981	4330 Vineyard, 4430 Orchard, 4835, 5635
9	S.62544 Stud - Manifold to Muffler	13543721	4330 Vineyard, 4430 Orchard, 4835, 5635
10	S.62662 Nut - Manifold to Muffler	5118186	4330 Vineyard, 4430 Orchard, 4835, 5635
11	S.62152 Gasket - Manifold to Muffler	5152380	4330 Vineyard, 4430 Orchard, 4835, 5635



**Sparex Replacement Spare Parts
for Ford/New Holland (65->)**

**Mufflers
(4 Cylinder)**



SPAREX No.	DESCRIPTION	EQUIVALENT	TRACTOR MODEL
1	S.66649 Muffler - Black Enamel - Vertical (A=29", B=5 1/2", C=16", D=7 1/2", 1 7/8" Inlet, 2" Outlet) Economy Replacement	DHPN5230A	5000, 5600, 6600, 6700, 5500, 5550, 655, 655A
2	S.06310 Muffler & Pipe Assembly - Vertical (A=41 1/2", B=13 1/2", C=15 1/2", D=12 1/2")	DHPN5230A D0NN5B255C	(5000 except Rowcrop), Ind. 5500, 5550
3	S.08533 Muffler - Vertical (A=49", B=4", C=27", D=18", 1 15/16" Inlet, 2" Outlet) NOTE: Recommended for Cab Tractors	D6NN5230B	(5000, 5600, 5900, 6600, 6700, Ind. 650, 6500 Early Style)
4	S.14520 Muffler - Vertical (A=42", B=7", C=27", D=8", 1 15/16" Inlet, 2" Outlet)	E4NN5230GB	(5000, 5600, 5900, 6600, 6700, Ind. 650, 6500 Late Style)
4	S.14519 Muffler - Vertical (A=48 1/2", B=4", C=26 1/2", D=18", 2 7/16" Inlet)	E4NN5230DA	7600, 7700, 5610, 6610, 6710, 7610, 7710, 5030, Ind. 750, 755, 755A, 755B, 7500
5	S.57049 Muffler - Horizontal Exhaust	44905942	4330 Vineyard, 4430 Orchard
6	S.05037 Muffler - Vertical Exhaust	5103482	4330 Vineyard, 4430 Orchard
7	S.05034 Pipe - Extension	44905154	4330 Vineyard, 4430 Orchard
8	S.62420 Clamp Kit - Extension Pipe to Muffler	5116793	4330 Vineyard, 4430 Orchard
9	S.58934 Muffler	5167695	4835, 5635
10	S.58936 Muffler	5169716	6635, 7635
11	S.75995 Muffler	82009292 E9NN5230CD17M	(5640, 6640, 7740 5/97->)
12	S.75997 Pipe	82004294 D9NN5C262AB17M	5640, 6640, 7740

These parts are Sparex parts and are not manufactured by the Original Equipment Manufacturer. Original Manufacturers' names, part numbers and descriptions are quoted for reference purposes only and are not intended to indicate or suggest that our replacement parts are made by the OEM.