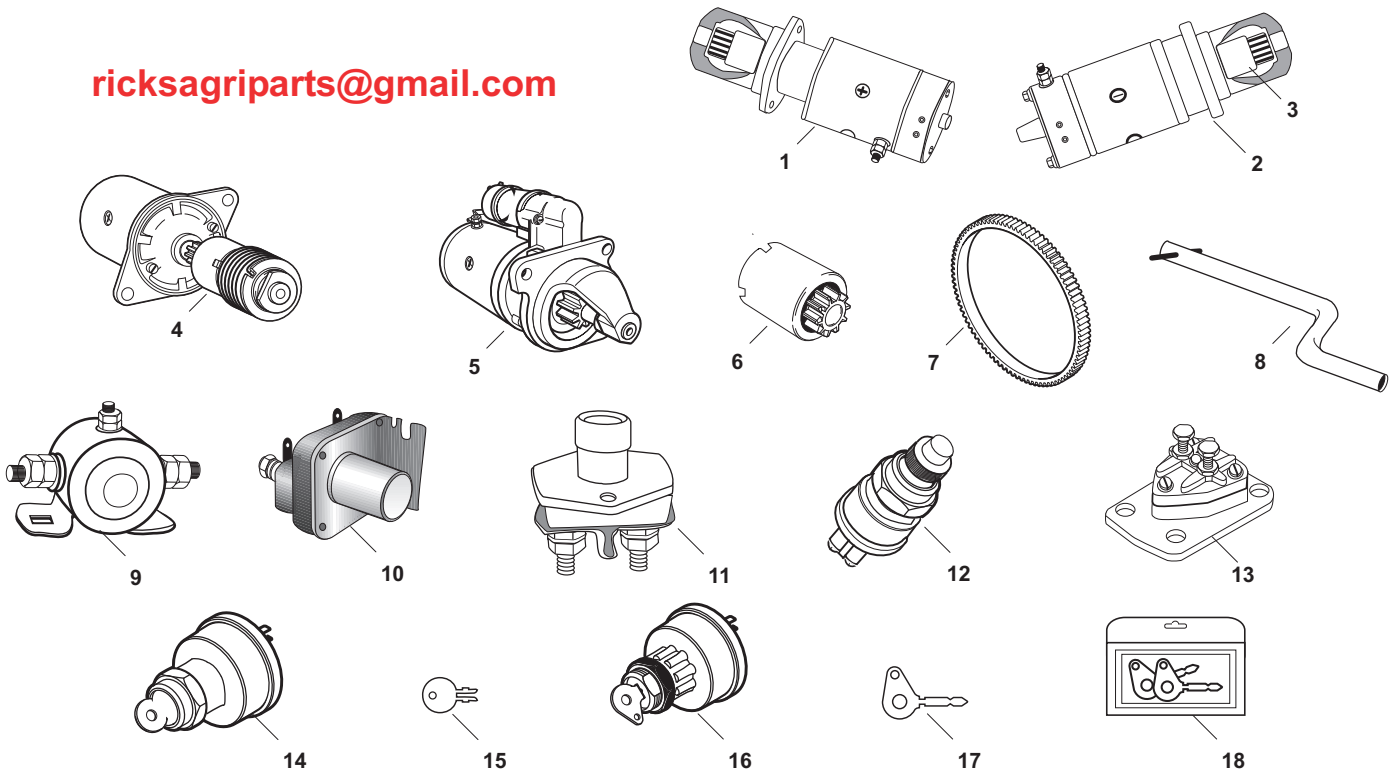
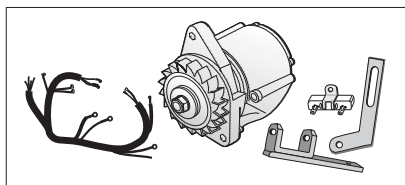


ricksagriparts@gmail.com

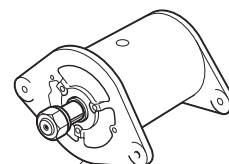


| OUR # | DESCRIPTION | EQUIVALENT | TRACTOR MODEL |
|-------|---------------------------------------------------------------------|--------------------|------------------------------------------------------|
| 1 | R43248 Starter (6 Volt) New - Not Rebuilt | 181541M91 | (TO20, TO30, TO35 >SN 161250) |
| 2 | R60354 Starter (6 Volt) 2 Bolt Mount, Type V139 | 829853M91 25519 | (TEA20, 80, 85mm Gas >SN 200001) |
| 3 | R43366 Starter Drive | | Fits R60354 Starter |
| 4 | R41136 Starter (12 Volt) | 829803M91 25038 | (TEA20 85mm Gas, SN200001>) |
| 5 | R60360 Starter (12 Volt) Economy - Temperate Climate | | (TEF20 20C Diesel), (FE35, TO35 23 Diesel) |
| 5 | R60353 Starter (12 Volt) Heavy Duty (2.7 Kw) | | (TEF20 20C Diesel), (FE35, TO35 23 Diesel) |
| 5 | R60991 Starter (12 Volt) Heavy Duty (3.0 Kw) | | (TEF20 20C Diesel), (FE35, TO35 23 Diesel) |
| 6 | R43365 Starter Drive (9 Teeth) Stamped: V139m M418, 25519 | | (TE20, TEA20 w/ Lucas Starter) |
| 7 | R42727 Ring Gear (145 Teeth) | 1750034M1 | (TE20, TO20, TO30, TO35, F40 Continental Gas) |
| 7 | R42422 Ring Gear (12 Volt) | 825452M1 | (TEA20 85mm Gas), (FE35 87mm Gas) |
| 8 | R13008 Crank - Starter | 180890M1 | TE20, TO20, TO30 |
| 9 | R60822 Solenoid (6 Volt) | 182330M91 | TO35 |
| 10 | R66323 Solenoid (6 Volt) | | (TEF20 20C Diesel) |
| 11 | R60821 Starter Switch - Push Button | 181679M1 | TO20, TO30 |
| 12 | R60824 Starter Switch - Push Button | 189158M91 | TO35, F40 |
| 13 | R42538 Starter Switch - Gear Stick Operated | 829960M91 76418 | (TEA20 80, 85mm Gas) |
| 14 | R60820 Ignition/Light Switch w/ Key (4 Position) | 180681M93 | TE20, TEA20, TO20, TO30, (TO35 Gas), F40 |
| 15 | R60835 Key | 180292M1 | TE20, TEA20, TO20, TO30, (TO35 Gas), F40 |
| 16 | R41288 Starter Switch - Cold Start | 883920M1 | (FE35 23C Diesel) |
| 17 | R03990 Key - Starter Switch | | (FE35 23C Diesel) |
| 18 | R04024 Key - Starter Switch (Pack of 2) | | (FE35 23C Diesel) |

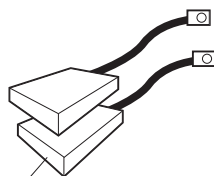
ricksagriparts@gmail.com



1



2



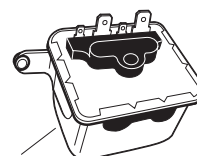
3



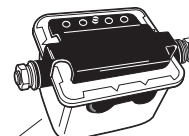
4



5

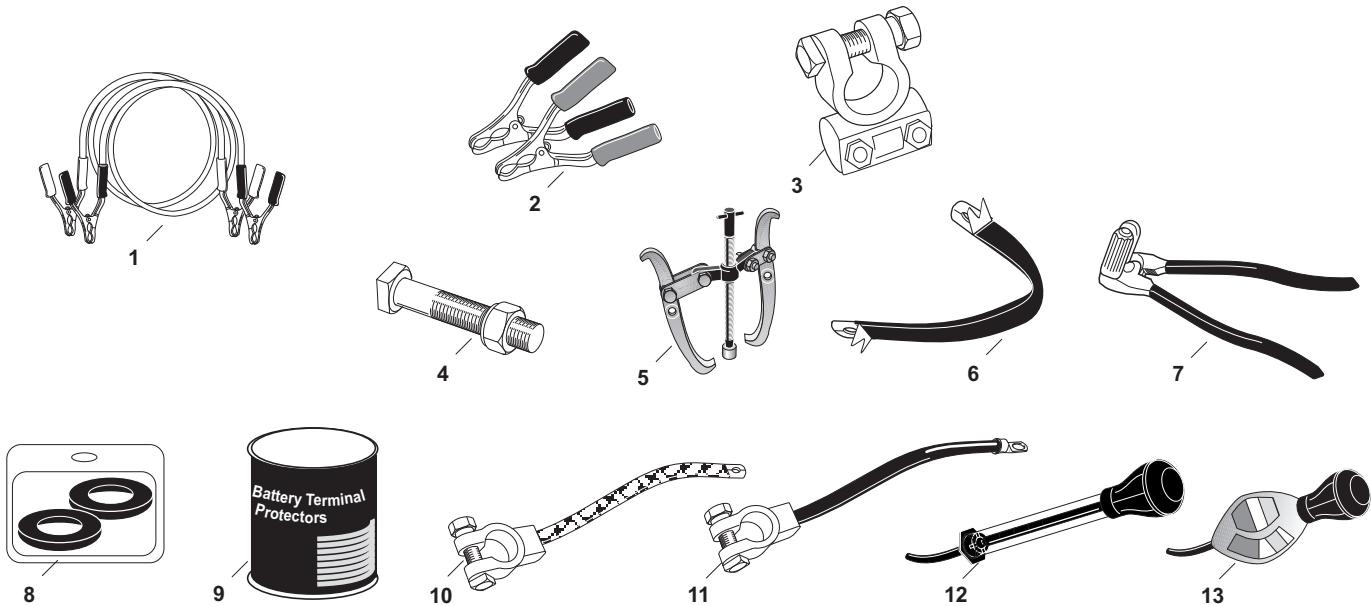


6



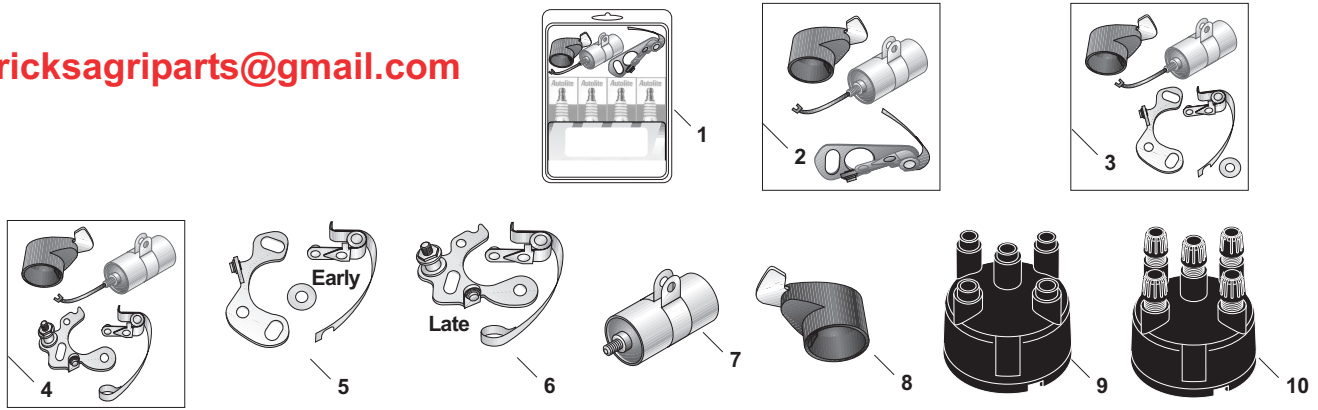
7

| OUR # | DESCRIPTION | EQUIVALENT | TRACTOR MODEL |
|-------|-------------------------------------------|----------------|-----------------------------------------------------------|
| 1 | R43233 Alternator Conversion Kit | | (TO30 less Tractormeter) |
| 2 | R41157 Generator w/ Fan - Lucas Type | 22703 22791 | (TEA20, TEF20, FE35, TO35 85, 87mm, Gas, 20C, 23C Diesel) |
| 3 | R41160 Brush Set - Generator - Lucas Type | 227541 | (TEA20, TEF20, FE35, TO35 85, 87mm, Gas, 20C, 23C Diesel) |
| 4 | R43246 Voltage Regulator - 6 Volt | 180142M92 | TO20, TO30, (TO35 Gas, >SN 161250) |
| 5 | R43247 Voltage Regulator - 12 Volt | 182548M92 | (TO35 Gas, SN 161251>), (TO35 23C Diesel), F40 |
| 6 | R41166 Voltage Regulator - 12 Volt | NCB120 | (TEA20 85mm Gas), (TEF20 20C Diesel, >SN 381659) |
| 7 | R41167 Voltage Regulator - 12 Volt | 37228F | (FE35 87mm Gas, >SN 304622, 23C Diesel) |

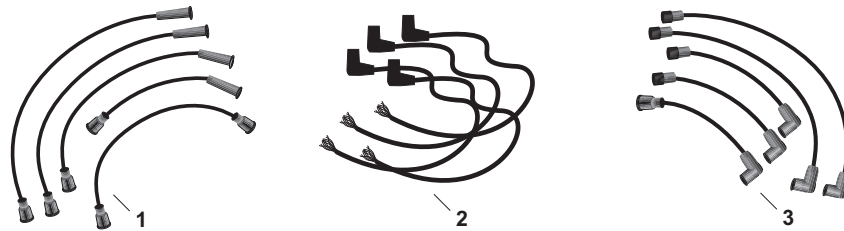


| OUR # | DESCRIPTION | EQUIVALENT | TRACTOR MODEL |
|-------|--------------------------------------------------------------------------------------------------|------------|-----------------------------|
| 1 | R20556 Jumper Cable - Extra Heavy Duty - 2 Gauge Cooper Wire (20') | | |
| 2 | R20557 Jumper Cable Clamp - Extra Heavy Duty Red/Black, Zinc Plated Steel (Set of 2) | | |
| 3 | R20561 Battery Terminal - Heavy Duty - (Card of 10) | | Fits: 6 to 2/0 gauge cables |
| 4 | R20570 Battery Terminal Bolt & Nut (5/16"-18 x 1 1/4") | | |
| 5 | R20563 Battery Terminal Puller | | |
| 6 | R20564 Battery Carry Strap for Post Terminal Batteries (14") | | |
| 7 | R20565 Battery Terminal Spreader | | |
| 8 | R20562 Terminal Protectors - Red/Black (Qty 2) | | |
| 9 | R20594 Terminal Protectors - Black (Qty 100) | | |
| 10 | R20545 Braided Ground Straps Flat - 2 Gauge (7") | | Fits up to 3/8" Stud |
| 10 | R20546 Braided Ground Straps Flat - 2 Gauge (9") | | Fits up to 3/8" Stud |
| 10 | R20547 Braided Ground Straps Flat - 2 Gauge (11") | | Fits up to 3/8" Stud |
| 10 | R20548 Braided Ground Straps Flat - 2 Gauge (14") | | Fits up to 3/8" Stud |
| 10 | R20549 Braided Ground Straps Flat - 2 Gauge (16") | | Fits up to 3/8" Stud |
| 10 | R20550 Braided Ground Straps Flat - 2 Gauge (19") | | Fits up to 3/8" Stud |
| 10 | R20551 Braided Ground Straps Flat - 2 Gauge (24") | | Fits up to 3/8" Stud |
| 11 | R20552 Battery Cable Top Post - Black - 2 Gauge (10") | | Fits up to 3/8" Stud |
| 11 | R20553 Battery Cable Top Post - Black - 2 Gauge (15") | | Fits up to 3/8" Stud |
| 11 | R20554 Battery Cable Top Post - Black - 2 Gauge (20") | | Fits up to 3/8" Stud |
| 11 | R20555 Battery Cable Top Post - Black - 2 Gauge (23") | | Fits up to 3/8" Stud |
| 11 | R20567 Battery Cable Top Post - Black - 2 Gauge (27") | | Fits up to 3/8" Stud |
| 11 | R20568 Battery Cable Top Post - Black - 2 Gauge (32") | | Fits up to 3/8" Stud |
| 11 | R20569 Battery Cable Top Post - Black - 2 Gauge (34") | | Fits up to 3/8" Stud |
| 12 | R20559 Temperature Correcting Battery Hydrometer - Temperature & Float Calibrated Reading | | |
| 13 | R20558 Battery Tester - Dial indicates battery charge & specific gravity | | |

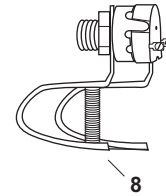
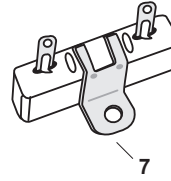
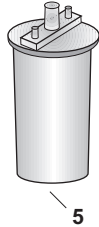
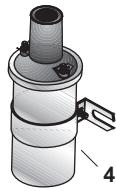
ricksagriparts@gmail.com



| OUR # | DESCRIPTION | EQUIVALENT | TRACTOR MODEL |
|-------|----------------------------------------------------------------------------------------------|------------------------|-------------------------------------------------------------------------------------------------------------|
| 1 | R42715 Tune-up Kit w/ Clip Held Cap (Points, Condenser, Rotor, 4 Autolite 386 Plugs) | | (TO20, TO30, TO35, F40 Z120, 129, 134 - Delco Distributor) |
| 1 | R42716 Tune-up Kit w/ Screw Held Cap (Points, Condenser, Rotor, 4 Autolite 386 Plugs) | | (TO35 Service Replacement Engine - Delco Distributor) |
| 1 | R42733 Tune-up Kit - Standard Motors (Points, Condenser, Rotor, 4 Autolite 425 Plugs) | | (TEA20, FE35 80, 85, 87mm Gas w/ Early Distributor) (See #5 or 6 to identify Early or Late) |
| 1 | R42734 Tune-up Kit - Standard Motors (Points, Condenser, Rotor, 4 Autolite 425 Plugs) | | (TEA20, FE35 80, 85, 87mm Gas w/ Late Lucas Distributor) (See #5 or 6 to identify Early or Late) |
| 2 | R61558 Ignition Kit w/ Clip Held Cap (Points, Condenser, Rotor) | 839011M91 1750498M1 | (TO20, TO30, TO35, F40 Delco Distributor - Z120, 129, 134) |
| 2 | R61909 Ignition Kit w/ Screw Held Cap (Points, Condenser, Rotor) | | (TO35 Delco Distributor - Service Replacement Eng) |
| 3 | R42772 Ignition Kit (Points, Condenser, Rotor) | | (TE20 Z120), (TEA20, FE35 80, 85, 87mm Early Lucas Dist) |
| 4 | R42773 Ignition Kit (Points, Condenser, Rotor) | | (TE20 Z120), (TEA20, FE35 80, 85, 87mm Late Lucas Distributor) |
| 5 | R42372 Point Set | 407050 | (TE20 Z120), (TEA20, FE35 80, 85, 87mm Early Lucas Distributor) |
| 6 | R42376 Point Set | 423153 | (TE20 Z120), (TEA20, FE35 80, 85, 87mm Late Lucas Distributor) |
| 7 | R42373 Condenser | 407044 | (TE20 Z120), (TEA20, FE35 80, 85, 87mm Lucas Distributor) |
| 8 | R42374 Rotor | 408355 | (TE20 Z120), (TEA20, FE35 80, 85, 87mm Lucas Distributor) |
| 9 | R61907 Distributor Cap - Clip Held - Delco | | (TO20, TO30, TO35, F40 Z120, 129, 134) |
| 9 | R61908 Distributor Cap - Screw Held - Delco | | (TO35 Service Replacement Engine) |
| 10 | R41169 Distributor Cap - Threaded Terminals - Lucas | | (TE20 Z120), (TEA20, FE35 80, 85, 87mm) |



ricksagriparts@gmail.com



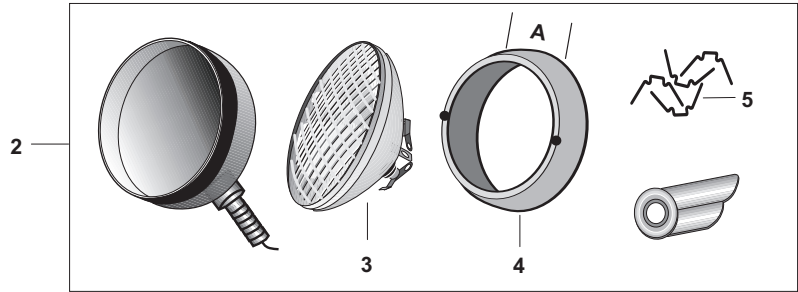
| OUR # | DESCRIPTION | EQUIVALENT | TRACTOR MODEL |
|-------|----------------------------------------------------------------------------------------------------|--------------------------|-----------------------------------------------------------|
| 1 | R42779 Spark Plug Wire Set - Custom | 830681M91 | (TO20, TO30, TO35, F40 Z120, 129, 134, Delco Distributor) |
| 2 | R66441 Spark Plug Wire Set - 4 Cyl - 90° Boot <u>High Quality Packard 440 Cable</u> | | Universal |
| 2 | R66442 Spark Plug Wire Set - 4 Cyl - 90° Boot Standard Copper Cable | | Universal |
| 2 | R02097 Spark Plug Wire Set - 4 Cyl - Straight Boot <u>High Quality Packard 440 Cable</u> | | Universal |
| 3 | R42375 Spark Plug Wire Set - 4 Cyl - Threaded Terminals | | (TE20, TEA20, FE35 80, 85, 87mm - Lucas Distributor) |
| 4 | R42377 Ignition Coil - 12 Volt w/ Threaded Top Terminal | 1015128M91 1038817M91 | (TEA20, FE35 Standard Motors 85mm) |
| 5 | R61548 Coil - 6 Volt - Use w/ External Resistor | 1024481M91 | TO20, TO30, TO35 |
| 5 | R61016 Coil - 12 Volt - Use w/ External Resistor | | Universal |
| 5 | R67080 Coil - 12 Volt - Use w/ Internal Resistor | | Universal |
| 6 | R61969 Spark Plug - Autolite 386 - 18mm (1/2" Reach) | | (TE20, TO20, TO30, TO35, F40 Z120, 129, 134) |
| 6 | R61934 Spark Plug - Autolite 425 - 14mm (1/2" Reach) | | (TEA20, FE35 80, 85, 87mm) |
| 7 | R43243 Ballist Resistor (.50 -.60 ohms) | | Universal |
| 8 | R52671 Voltage Reducer - 12 Volt to 6 Volt | | Universal |



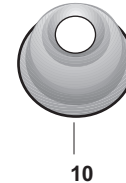
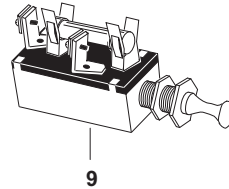
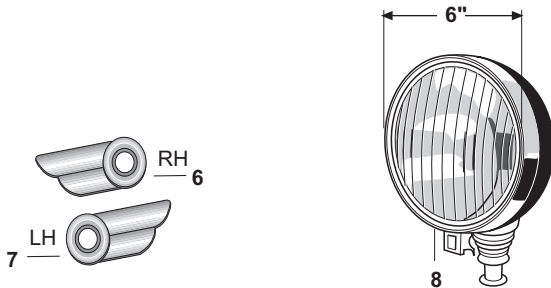
| OUR # | DESCRIPTION | EQUIVALENT | TRACTOR MODEL |
|-------|---------------------------------------------------------------------------------------------------------|--------------------------------------|-----------------------------------------------------------|
| 1 | R42754 Tractormeter | 193966M91 193967M91 | (TO35 Z134), F40 |
| 2 | R41069 Tractormeter | 1850093M93 | (TO35 23C), (FE35 87mm Gas), (FE35 23C Diesel >SN 307657) |
| 3 | R41091 Cable - Tractormeter | 829487M91 | (TO35 23C), (FE35 87mm Gas), (FE35 23C Diesel >SN 307657) |
| 4 | R42905 Drive Assembly - Tractormeter | | (TO20, TO30, TO35, F40 Z120, 129, 134) |
| 5 | R42784 Oil Pressure Gauge - Chrome (3/8-24 UNF Female Thread) | 180100M92 | (TE20, TO20, TO30, TO35, F40 Z120, 129, 134) |
| 6 | R61466 Oil Pressure Gauge (1/8" NPT) - Chrome w/ Male Fitting | | TE20, TEA20, TO20, TO30 |
| 7 | R04342 Oil Pressure Gauge - Chrome | 506902M92 1853097M91 3381907M1 | TEF20, TO35, FE35 |
| 8 | R61171 Oil Pressure Gauge (40 PSI) Red/Green | 506902M92 | |
| 9 | R61063 Oil Gauge - 50Lb (2" Dia) - Black | | |
| 10 | R60758 Oil Gauge - 80Lb (2" Dia) - Black | | |
| 11 | R42392 Grommet - Ammeter | | Mounts R04340 Ammeter to 2" Hole |
| 12 | R04340 Ammeter (1 5/8" Dia) - Black Rubber Mounting Grommet R42392 must be used to fit 2" Mounting Hole | 36047F | TEF20, FE35 |
| 13 | R60759 Ammeter - 30 Amp (2" Dia) - Chrome | | |
| 14 | R61064 Ammeter - 50 Amp (2" Dia) - Chrome | | |
| 15 | R04341 Water Temperature Gauge - Chrome (74" Cable) | 180727M91 881396M91 | (FE35 87mm), F40 |
| 15 | R43045 Water Temperature Gauge - Chrome (46" Cable) Does not say "England" | 180727M93 | (TO35 w/ Continental Engine) |
| 16 | R52672 Analog Hourmeter (2") - Black 12-24 Volt - Black Ring | | Universal |
| 17 | R52673 LCD Hourmeter (2") - Black 12-24 Volt - Black Ring | | Universal |



ricksagiparts@gmail.com



This kit and components are exactly like the original.



| OUR # | DESCRIPTION | EQUIVALENT | TRACTOR MODEL |
|-------|-------------------------------------------------------------------------------------------------------|------------------------|------------------------------------------------------|
| 1 | R61633 Headlight (6") Steel Body w/ Rubber Bezel, Non-sealed Beam - Gray - 6 Volt | | Universal |
| 1 | R61635 Headlight (6") Steel Body w/ Rubber Bezel, Non-sealed Beam - Black Primer - 6 Volt | | Universal |
| 1 | R61634 Headlight (6") Steel Body w/ Rubber Bezel, Non-sealed Beam - Gray - 12 Volt | | Universal |
| 1 | R61636 Headlight (6") Steel Body w/ Rubber Bezel, Non-sealed Beam - Black Primer - 12 Volt | | Universal |
| 2 | R43370 Headlight Kit - LH (6") Primer - 6 Volt | 231495M91 | <i>Available April, 2006 (Assembly Required)</i> |
| 2 | R43371 Headlight Kit - LH (6") Primer - 12 Volt | 186141M91 186142M91 | <i>Available April, 2006 (Assembly Required)</i> |
| 2 | R43372 Headlight Kit - LH (6") Chrome Ring - 6 Volt - | 231495M91 | <i>Available April, 2006 (Assembly Required)</i> |
| 2 | R43374 Headlight Kit - LH (6") Chrome Ring - 12 Volt - | 186141M91 186142M91 | <i>Available April, 2006 (Assembly Required)</i> |
| 2 | R22342 Headlight Kit - RH (6") Primer - 6 Volt | 231495M91 | <i>Available April, 2006 (Assembly Required)</i> |
| 2 | R22343 Headlight Kit - RH (6") Primer - 12 Volt | 186141M91 186142M91 | <i>Available April, 2006 (Assembly Required)</i> |
| 2 | R22340 Headlight Kit - RH (6") Chrome Ring - 6 Volt - | 231495M91 | <i>Available April, 2006 (Assembly Required)</i> |
| 2 | R22341 Headlight Kit - RH (6") Chrome Ring - 12 Volt - | 186141M91 186142M91 | <i>Available April, 2006 (Assembly Required)</i> |
| 3 | R66415 Sealed Beam Bulbs (5 3/4") 6 Volt (4019 Bulb) | 1002802M91 | (TE20, TEA20, TO20, TO30, TO35 >SN 161250) |
| 3 | R66416 Sealed Beam Bulbs (5 3/4") 12 Volt (4419 Bulb) | 1752866M91 | (TO35 SN 161251>), F40 |
| 4 | R43074 Headlight/Worklight Ring w/ Ground Wire (A=1 1/16" Thick) Use 5 3/4" Bulb - Chrome | 1752311M91 | TE20, TEA20, TO20, TO30, TO35, F40 |
| 4 | R43057 Headlight/Worklight Ring w/ Ground Wire (A=1 1/16" Thick) Use 5 3/4" Bulb - Grey Primer | 1752311M91 | TE20, TEA20, TO20, TO30, TO35, F40 |
| 5 | R43070 Clips - Bulb Retaining - Pack of 4 | 1750642M1 | TE20, TEA20, TO20, TO30, TO35, F40 |
| 6 | R66561 Winged Headlight Bracket - RH | 510438M1 | TE20, TEA20, TO20, TO30, TO35, F40 |
| 7 | R66562 Winged Headlight Bracket - LH | 510439M1 | TE20, TEA20, TO20, TO30, TO35, F40 |
| 8 | R61925 Headlamp - European Style - 12 Volt - Red w/ Bulb - Hi-Low Beam w/ Parking Light | | FE35 |
| 9 | R60828 Switch - Headlight (Fused) | | Universal |
| 10 | R66599 Steel Headlight Socket - Primer - Restoration Quality | | TE20, TEA20, TO20, TO30, TO35, F40 |